

NATIONAL  
GEOGRAPHIC  
LEARNING

CENGAGE  
Learning

# Biology

Concepts and Applications | 9e

Starr  
Evers  
Starr





It's time to give **YOU** something fresh.

W E L C O M E T O...



# MindTap™

Designed to support the way YOU learn and where you learn, MindTap is well beyond an eBook, assignments or digital supplement, a resource center website, a course delivery platform, or a Learning Management System.

**MindTap is the first in a new category—  
The Personal Learning Experience.**



See for yourself.  
View a MindTap demo at  
[www.cengage.com/mindtap](http://www.cengage.com/mindtap).



“This thing is awesome. It’s very, very easy to use. Your book is right there and has easy tabs to go through. There are lots of extra functions on the side such as highlighting ... note taking ... it even reads to you!”

**Chris Baggett**  
Student, Arkansas Tech University



**7 OUT OF 8**

MindTap students would recommend MindTap to their friends.

# Biology

Concepts and Applications 9e

## About the Cover Photo

Despite their awkward waddle on land, emperor penguins soar through the sea. Once they dive into the water, these animals are both graceful and unbelievably fast. Scientists have now discovered the secret to a swimming penguin's speed: A layer of air that stays between the water and their dense coat of feathers acts as a lubricant.

When an emperor penguin swims, it is slowed by the friction between its body and the water, keeping its maximum speed somewhere between four and nine feet per second. But in short bursts the penguin can double or even triple its speed by releasing air from its feathers in the form of tiny bubbles. The bubbles reduce the density and viscosity of the water around the penguin's body, cutting drag and enabling the bird to reach speeds that would otherwise be impossible—and that help the penguins avoid fast-moving predators such as leopard seals.

The key to this talent is in the penguin's feathers. Like other birds, emperors have the capacity to fluff their feathers and insulate their bodies with a layer of air. Unlike most birds, which have rows of feathers with bare skin between them, emperor penguins have a dense, uniform coat of feathers. And because the bases of their feathers include tiny filaments—just 20 microns in diameter, less than half the width of a thin human hair—air is trapped in a fine, downy mesh and released as microbubbles so tiny that they form a lubricating coat on the feather surface.

Though feathers are not an option for ships, technology may finally be catching up with biology. In 2010 a Dutch company started selling systems that lubricate the hulls of container ships with bubbles. Last year Mitsubishi announced that it had designed an air-lubrication system for supertankers. But so far no one has designed anything that can gun past a leopard seal and launch over a wall of sea ice. That's still proprietary technology.

Join photographer Paul Nicklen as he captures unique video of emperor penguins soaring through the sea and launching their bodies out of the water onto the ice at <http://ngm.nationalgeographic.com/2012/11/emperor-penguins/behind-the-scenes-video>.





# Biology

Concepts and Applications 9e

Cecie Starr  
Christine A. Evers  
Lisa Starr



Australia • Brazil • Japan • Korea • Mexico • Singapore • Spain • United Kingdom • United States

This is an electronic version of the print textbook. Due to electronic rights restrictions, some third party content may be suppressed. Editorial review has deemed that any suppressed content does not materially affect the overall learning experience. The publisher reserves the right to remove content from this title at any time if subsequent rights restrictions require it. For valuable information on pricing, previous editions, changes to current editions, and alternate formats, please visit [www.cengage.com/highered](http://www.cengage.com/highered) to search by ISBN#, author, title, or keyword for materials in your areas of interest.

**Important Notice:** Media content referenced within the product description or the product text may not be available in the eBook version.

***Biology: Concepts and Applications,  
Ninth Edition***

Cecie Starr, Christine A. Evers, Lisa Starr

Senior Product Manager: Peggy Williams

Content Developer: Jake Warde

Product Assistant: Victor Luu

Media Developer: Lauren Oliveira

Executive Brand Manager: Nicole Hamm

Senior Marketing Development Manager:  
Tom Ziolkowski

Content Project Manager: Hal Humphrey

Senior Art Director: Pamela Galbreath

Manufacturing Planner: Karen Hunt

Senior Rights Acquisitions Specialist:  
Dean Dauphinais

Production Service:

Grace Davidson & Associates, Inc.

Photo Researcher: Christina Ciaramella,  
PreMedia Global

Text Researcher: Melissa Tomaselli and  
Sunetra Mukudan, PreMedia Global

Copy Editor: Anita Wagner

Illustrators: Lisa Starr, ScEYence Studios,  
Precision Graphics

Text and Cover Designer: Irene Morris

Cover and Title Page Image: Emperor penguins;  
PAUL NICKLEN/National Geographic Creative

Compositor: Lachina

© 2015, 2011 Cengage Learning

WCN: 02-200-203

ALL RIGHTS RESERVED. No part of this work covered by the copyright herein may be reproduced, transmitted, stored, or used in any form or by any means graphic, electronic, or mechanical, including but not limited to photocopying, recording, scanning, digitizing, taping, Web distribution, information networks, or information storage and retrieval systems, except as permitted under Section 107 or 108 of the 1976 United States Copyright Act, without the prior written permission of the publisher.

For product information and technology assistance, contact us at  
**Cengage Learning Customer & Sales Support, 1-800-354-9706**

For permission to use material from this text or product,  
submit all requests online at **www.cengage.com/permissions**.

Further permissions questions can be e-mailed to  
**permissionrequest@cengage.com**.

Library of Congress Control Number: 2013946059

Paper Edition

ISBN-13: 978-1-285-42781-2

ISBN-10: 1-285-42781-5

High School Edition

ISBN-13: 978-1-285-42785-0

ISBN-10: 1-285-42785-8

**Cengage Learning**

200 First Stamford Place, 4th Floor  
Stamford, CT 06902  
USA

Cengage Learning is a leading provider of customized learning solutions with office locations around the globe, including Singapore, the United Kingdom, Australia, Mexico, Brazil, and Japan. Locate your local office at **www.cengage.com/global**.

Cengage Learning products are represented in Canada by Nelson Education, Ltd.

To learn more about Cengage Learning Solutions, visit **www.cengage.com**.

Purchase any of our products at your local college store or at our preferred online store **www.cengagebrain.com**.

Printed in the United States of America

1 2 3 4 5 6 7 17 16 15 14 13

# Contents in Brief

## INTRODUCTION

- 1 Invitation to Biology

## UNIT I PRINCIPLES OF CELLULAR LIFE

- 2 Life's Chemical Basis
- 3 Molecules of Life
- 4 Cell Structure
- 5 Ground Rules of Metabolism
- 6 Where It Starts—Photosynthesis
- 7 How Cells Release Chemical Energy

## UNIT II GENETICS

- 8 DNA Structure and Function
- 9 From DNA to Protein
- 10 Control of Gene Expression
- 11 How Cells Reproduce
- 12 Meiosis and Sexual Reproduction
- 13 Observing Patterns in Inherited Traits
- 14 Human Inheritance
- 15 Biotechnology

## UNIT III PRINCIPLES OF EVOLUTION

- 16 Evidence of Evolution
- 17 Processes of Evolution
- 18 Life's Origin and Early Evolution

## UNIT IV EVOLUTION AND BIODIVERSITY

- 19 Viruses, Bacteria, and Archaea
- 20 The Protists
- 21 Plant Evolution
- 22 Fungi
- 23 Animals I: Major Invertebrate Groups
- 24 Animals II: The Chordates

## UNIT V HOW PLANTS WORK

- 25 Plant Tissues
- 26 Plant Nutrition and Transport
- 27 Plant Reproduction and Development



## UNIT VI HOW ANIMALS WORK

- 28 Animal Tissues and Organ Systems
- 29 Neural Control
- 30 Sensory Perception
- 31 Endocrine Control
- 32 Structural Support and Movement
- 33 Circulation
- 34 Immunity
- 35 Respiration
- 36 Digestion and Human Nutrition
- 37 Maintaining the Internal Environment
- 38 Reproduction and Development

## UNIT VII PRINCIPLES OF ECOLOGY

- 39 Animal Behavior
- 40 Population Ecology
- 41 Community Ecology
- 42 Ecosystems
- 43 The Biosphere
- 44 Human Effects on the Biosphere



# Detailed Contents

## INTRODUCTION

### 1 Invitation to Biology

#### 1.1 HOW DO LIVING THINGS DIFFER FROM NONLIVING THINGS? 4

Life Is More Than the Sum of Its Parts 4

Life's Organization 4

#### 1.2 HOW ARE ALL LIVING THINGS ALIKE? 6

Organisms Require Energy and Nutrients 6

Organisms Sense and Respond to Change 7

Organisms Use DNA 7

#### 1.3 HOW ARE LIVING THINGS DIFFERENT? 8

■ People Matter: Kristofer Helgen,  
National Geographic Explorer 9

#### 1.4 WHAT IS A SPECIES? 10

A Rose by Any Other Name . . . 10

#### 1.5 HOW DOES SCIENCE WORK? 12

Thinking About Thinking 12

The Scientific Method 12

#### 1.6 WHY DO BIOLOGISTS PERFORM EXPERIMENTS? 14

Potato Chips and Stomachaches 14

Butterflies and Birds 14

#### 1.7 WHAT ARE SOME POTENTIAL PITFALLS IN SCIENTIFIC INQUIRY? 16

Sampling Error 16

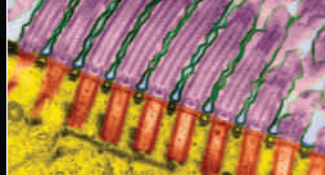
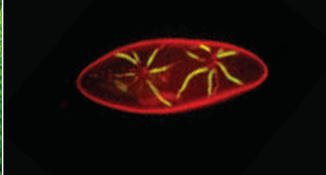
Bias in Interpreting Results 16

The Limits of Science 17

#### 1.8 WHAT IS A "THEORY"? 18

#### 1.9 APPLICATION: THE SECRET LIFE OF EARTH 19





## UNIT I PRINCIPLES OF CELLULAR LIFE

### 2 Life's Chemical Basis

#### 2.1 WHAT ARE THE BASIC BUILDING BLOCKS OF ALL MATTER? 24

Isotopes and Radioisotopes 24

Tracers 25

- People Matter: Kenneth Sims, National Geographic Explorer 25

#### 2.2 WHY DO ATOMS INTERACT? 26

Electrons Matter 26

About Vacancies 27

#### 2.3 HOW DO ATOMS INTERACT IN CHEMICAL BONDS? 28

Ionic Bonds 28

Covalent Bonds 28

#### 2.4 WHAT ARE LIFE-SUSTAINING PROPERTIES OF WATER? 30

Hydrogen Bonding in Water 30

Water's Special Properties 30

Water Is an Excellent Solvent 30

Water Has Cohesion 31

Water Stabilizes Temperature 31

#### 2.5 WHY ARE HYDROGEN IONS IMPORTANT IN BIOLOGICAL SYSTEMS? 32

#### 2.6 APPLICATION: MERCURY RISING 33

### 3 Molecules of Life

#### 3.1 WHAT ARE THE MOLECULES OF LIFE? 38

The Stuff of Life: Carbon 38

From Structure to Function 38

#### 3.2 WHAT IS A CARBOHYDRATE? 40

Simple Sugars 40

Polymers of Simple Sugars 40

#### 3.3 WHAT ARE LIPIDS? 42

Fats 42

Phospholipids 43

Waxes 43

Steroids 43

#### 3.4 WHAT ARE PROTEINS? 44

Amino Acid Subunits 44

Structure Dictates Function 44

#### 3.5 WHY IS PROTEIN STRUCTURE IMPORTANT? 46

#### 3.6 WHAT ARE NUCLEIC ACIDS? 46

#### 3.7 APPLICATION: FEAR OF FRYING 47

### 4 Cell Structure

#### 4.1 WHAT IS A CELL? 52

Cell Theory 52

Components of All Cells 52

Constraints on Cell Size 53

#### 4.2 HOW DO WE SEE CELLS? 54

- People Matter: Dr. Aydogan Ozcan, National Geographic Explorer 55

#### 4.3 WHAT IS A MEMBRANE? 56

The Fluid Mosaic Model 56

Proteins Add Function 57

#### 4.4 HOW ARE BACTERIA AND ARCHAEA ALIKE? 58

Biofilms 59

#### 4.5 WHAT DO EUKARYOTIC CELLS HAVE IN COMMON? 60

The Nucleus 60

#### 4.6 WHAT IS THE ENDOMEMBRANE SYSTEM? 62

A Variety of Vesicles 62

Endoplasmic Reticulum 63

Golgi Bodies 63

#### 4.7 WHAT DO MITOCHONDRIA DO? 64

#### 4.8 WHAT ARE PLASTIDS? 65

#### 4.9 WHAT IS A CYTOSKELETON? 66

#### 4.10 WHAT STRUCTURES FORM ON THE OUTSIDE OF EUKARYOTIC CELLS? 68

Cell Matrixes 68

Cell Junctions 69

#### 4.11 WHAT IS LIFE? 70

- People Matter: Dr. Kevin Peter Hand, National Geographic Explorer 70

#### 4.12 APPLICATION: FOOD FOR THOUGHT 71

### 5 Ground Rules of Metabolism

#### 5.1 WHAT IS ENERGY? 78

Energy Disperses 78

Energy's One-Way Flow 79

#### 5.2 HOW DO CELLS USE ENERGY? 80

Chemical Bond Energy 80

Why Earth Does Not Go Up in Flames 80

Energy In, Energy Out 81

#### 5.3 HOW DO ENZYMES WORK? 82

The Need for Speed 82

Forcing Substrates Together 82

Orienting Substrates 82

Inducing Fit 82

Shutting Out Water 82

Enzyme Activity 83



- 5.4 WHAT IS A METABOLIC PATHWAY?** 84
  - Controls Over Metabolism 84
  - Electron Transfers 85
- 5.5 HOW DO COFACTORS WORK?** 86
  - ATP—A Special Coenzyme 87
- 5.6 WHAT INFLUENCES THE MOVEMENT OF IONS AND MOLECULES?** 88
  - Size 88
  - Temperature 88
  - Concentration 88
  - Charge 88
  - Pressure 88
  - Semipermeable Membranes 88
  - Turgor 89
- 5.7 HOW DO IONS AND CHARGED MOLECULES CROSS CELL MEMBRANES?** 90
  - Transport Protein Specificity 90
  - Facilitated Diffusion 90
  - Active Transport 90
- 5.8 HOW DO LARGE PARTICLES AND BULK SUBSTANCES MOVE ACROSS CELL MEMBRANES?** 92
  - Vesicle Movement 92
  - Membrane Trafficking 93
- 5.9 APPLICATION: A TOAST TO ALCOHOL DEHYDROGENASE** 94

## 6 Where It Starts— Photosynthesis

- 6.1 HOW DO PHOTOSYNTHESIZERS ABSORB LIGHT?** 100
  - Properties of Light 100
  - Capturing a Rainbow 100
- 6.2 WHY DO CELLS USE MORE THAN ONE PHOTOSYNTHETIC PIGMENT?** 102
- 6.3 WHAT HAPPENS DURING PHOTOSYNTHESIS?** 103
- 6.4 HOW DO THE LIGHT-DEPENDENT REACTIONS WORK?** 104
  - The Noncyclic Pathway 104
  - The Cyclic Pathway 105
- 6.5 HOW DO THE LIGHT-INDEPENDENT REACTIONS WORK?** 106
  - The Calvin–Benson Cycle 106
  - Adaptations to Climate 106
- 6.6 APPLICATION: GREEN ENERGY** 108
  - People Matter: Willie Smits, National Geographic Grantee 109

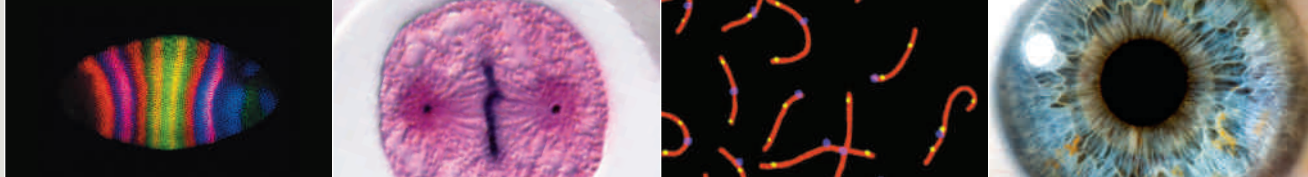
## 7 How Cells Release Chemical Energy

- 7.1 HOW DO CELLS ACCESS THE CHEMICAL ENERGY IN SUGARS?** 114
  - Aerobic Respiration and Fermentation Compared 114
- 7.2 HOW DID ENERGY-RELEASING PATHWAYS EVOLVE?** 115
  - People Matter: Dr. J. William Schopf, National Geographic Grantee 115
- 7.3 WHAT IS GLYCOLYSIS?** 116
- 7.4 WHAT HAPPENS DURING THE SECOND STAGE OF AEROBIC RESPIRATION?** 118
  - Acetyl–CoA Formation 118
  - The Krebs Cycle 118
- 7.5 WHAT HAPPENS DURING THE THIRD STAGE OF AEROBIC RESPIRATION?** 120
- 7.6 WHAT IS FERMENTATION?** 122
  - Two Fermentation Pathways 122
    - Alcoholic Fermentation 122
    - Lactate Fermentation 122
- 7.7 CAN THE BODY USE ANY ORGANIC MOLECULE FOR ENERGY?** 124
  - Energy From Dietary Molecules 124
    - Complex Carbohydrates 125
    - Fats 125
    - Proteins 125
  - People Matter: Dr. Benjamin Rapoport 125
- 7.8 APPLICATION: MITOCHONDRIAL MALFUNCTION** 126

## UNIT II GENETICS

## 8 DNA Structure and Function

- 8.1 HOW WAS DNA'S FUNCTION DISCOVERED?** 132
- 8.2 HOW WAS DNA'S STRUCTURE DISCOVERED?** 134
  - Building Blocks of DNA 134
  - DNA's Base Sequence 135
- 8.3 WHAT IS A CHROMOSOME?** 136
  - Chromosome Number and Type 136
- 8.4 HOW DOES A CELL COPY ITS DNA?** 138
  - Semiconservative Replication 138
  - Directional Synthesis 139
- 8.5 WHAT CAUSES MUTATIONS?** 140
  - Replication Errors 140
  - Agents of DNA Damage 140
    - People Matter: Dr. Rosalind Franklin 141
- 8.6 HOW DOES CLONING WORK?** 142
- 8.7 APPLICATION: A HERO DOG'S GOLDEN CLONES** 143



## 9 From DNA to Protein

### 9.1 WHAT IS THE INFORMATION CARRIED IN DNA? 148

DNA to RNA 148

RNA to Protein 148

- People Matter: Dr. John “Jack” Horner, National Geographic Grantee 149

### 9.2 HOW IS RNA ASSEMBLED? 150

Post-Transcriptional Modifications 151

### 9.3 WHAT ROLES DO mRNA, rRNA, AND tRNA PLAY DURING TRANSLATION? 152

The Messenger: mRNA 152

The Translators: rRNA and tRNA 153

### 9.4 HOW IS mRNA TRANSLATED INTO PROTEIN? 154

### 9.5 WHAT HAPPENS AFTER A GENE BECOMES MUTATED? 156

### 9.6 APPLICATION: THE APTLY ACRONYMED RIPS 158

## 10 Control of Gene Expression

### 10.1 WHAT IS GENE CONTROL? 164

Gene Expression Control 164

Transcription 164

mRNA Processing and Transport 164

Translation 165

Post-Translational Modification 165

### 10.2 HOW DO GENES CONTROL DEVELOPMENT IN ANIMALS? 166

Master Genes 166

Homeotic Genes 166

### 10.3 WHAT ARE SOME OUTCOMES OF GENE CONTROL IN EUKARYOTES? 168

X Marks the Spot 168

Male Sex Determination in Humans 168

Flower Formation 169

### 10.4 WHAT ARE SOME OUTCOMES OF GENE CONTROL IN PROKARYOTES? 170

The *lac* Operon 170

Lactose Intolerance 171

### 10.5 CAN GENE EXPRESSION PATTERNS BE INHERITED? 172

### 10.6 APPLICATION: BETWEEN YOU AND ETERNITY 173

## 11 How Cells Reproduce

### 11.1 HOW DO CELLS REPRODUCE? 178

Multiplication by Division 178

Control Over the Cell Cycle 179

### 11.2 WHAT IS THE SEQUENCE OF EVENTS DURING MITOSIS? 180

### 11.3 HOW DOES A EUKARYOTIC CELL DIVIDE? 182

### 11.4 WHAT IS THE FUNCTION OF TELOMERES? 183

### 11.5 WHAT HAPPENS WHEN CONTROL OVER THE CELL CYCLE IS LOST? 184

The Role of Mutations 184

Cancer 184

### 11.6 APPLICATION: HENRIETTA'S IMMORTAL CELLS 186

- People Matter: Dr. Iain Couzin, National Geographic Explorer 187

## 12 Meiosis and Sexual Reproduction

### 12.1 WHY SEX? 192

Introducing Alleles 192

On the Advantages of Sex 192

- People Matter: Maurine Neiman, National Geographic Grantee 193

### 12.2 WHY IS MEIOSIS NECESSARY FOR SEXUAL REPRODUCTION? 194

Meiosis Halves the Chromosome Number 194

Fertilization Restores the Chromosome Number 195

### 12.3 WHAT HAPPENS TO A CELL DURING MEIOSIS? 196

Meiosis I 196

Meiosis II 197

### 12.4 HOW DOES MEIOSIS GIVE RISE TO NEW COMBINATIONS OF PARENTAL ALLELES? 198

Crossing Over in Prophase I 198

Chromosome Segregation 198

### 12.5 ARE THE PROCESSES OF MITOSIS AND MEIOSIS RELATED? 200

### 12.6 APPLICATION: HOW TO SURVIVE FOR 80 MILLION YEARS WITHOUT SEX 201

## 13 Observing Patterns in Inherited Traits

### 13.1 HOW DO ALLELES CONTRIBUTE TO TRAITS? 206

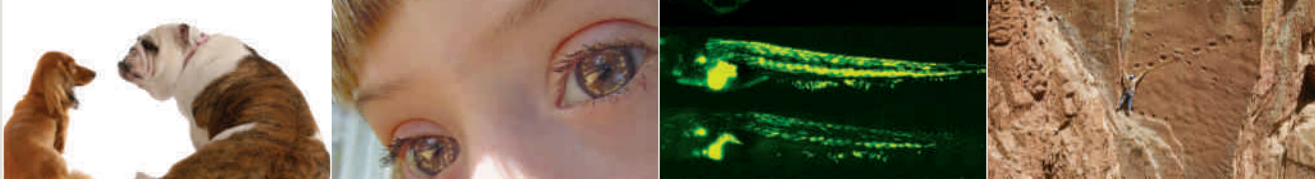
Mendel's Experiments 206

Inheritance in Modern Terms 206

### 13.2 HOW ARE ALLELES DISTRIBUTED INTO GAMETES? 208

### 13.3 HOW ARE GENE PAIRS DISTRIBUTED INTO GAMETES? 210

Contribution of Crossovers 210



### 13.4 ARE ALL GENES INHERITED IN A MENDELIAN PATTERN? 212

- Codominance 212
- Incomplete Dominance 212
- Epistasis 213
- Pleiotropy 213

### 13.5 DOES THE ENVIRONMENT AFFECT PHENOTYPE? 214

- Some Environmental Effects 214
  - Seasonal Changes in Coat Color 214
  - Effect of Altitude on Yarrow 214
  - Alternative Phenotypes in Water Fleas 214
  - Psychiatric Disorders 215

■ People Matter: Dr. Gay Bradshaw 215

### 13.6 DO ALL TRAITS OCCUR IN DISTINCT FORMS? 216

### 13.7 APPLICATION: MENACING MUCUS 217

## 14 Human Inheritance

### 14.1 HOW DO WE STUDY INHERITANCE PATTERNS IN HUMANS? 222

- Types of Genetic Variation 222

■ People Matter: Dr. Nancy Wexler 223

### 14.2 HOW DO WE KNOW WHEN A TRAIT IS AFFECTED BY AN ALLELE ON AN AUTOSOME? 224

- The Autosomal Dominant Pattern 224
  - Achondroplasia 224
  - Huntington's Disease 224
  - Hutchinson–Gilford Progeria 224
- The Autosomal Recessive Pattern 225
  - Tay–Sachs Disease 225
  - Albinism 225

### 14.3 HOW DO WE KNOW WHEN A TRAIT IS AFFECTED BY AN ALLELE ON AN X CHROMOSOME? 226

- The X-Linked Recessive Pattern 226
  - Red–Green Color Blindness 226
  - Duchenne Muscular Dystrophy 227
  - Hemophilia A 227

### 14.4 HOW DOES CHROMOSOME STRUCTURE CHANGE? 228

- Types of Chromosomal Change 228
  - Duplication 228
  - Deletion 228
  - Inversion 228
  - Translocation 228
- Chromosome Changes in Evolution 229

### 14.5 WHAT ARE THE EFFECTS OF CHROMOSOME NUMBER CHANGES IN HUMANS? 230

- Autosomal Aneuploidy and Down Syndrome 230
- Sex Chromosome Aneuploidy 230
  - Turner Syndrome 230
  - XXX Syndrome 231
  - Klinefelter Syndrome 231
  - XYY Syndrome 231

### 14.6 HOW DO WE USE WHAT WE KNOW ABOUT HUMAN INHERITANCE? 232

### 14.7 APPLICATION: SHADES OF SKIN 233

## 15 Biotechnology

### 15.1 WHAT IS DNA CLONING? 238

- Cut and Paste 238
- cDNA Cloning 239

### 15.2 HOW DO RESEARCHERS STUDY ONE GENE IN THE CONTEXT OF MANY? 240

- DNA Libraries 240
- PCR 240

### 15.3 HOW IS DNA SEQUENCE DETERMINED? 242

- The Human Genome Project 243

### 15.4 HOW DO WE USE WHAT RESEARCHERS DISCOVER ABOUT GENOMES? 244

- DNA Profiling 244

### 15.5 WHAT IS GENETIC ENGINEERING? 246

### 15.6 CAN WE GENETICALLY MODIFY PEOPLE? 248

- Gene Therapy 248
- Eugenics 248

### 15.7 APPLICATION: PERSONAL GENETIC TESTING 249

## UNIT III PRINCIPLES OF EVOLUTION

## 16 Evidence of Evolution

### 16.1 HOW DID OBSERVATIONS OF NATURE CHANGE OUR THINKING IN THE 19TH CENTURY? 254

### 16.2 WHAT IS NATURAL SELECTION? 256

### 16.3 WHY DO BIOLOGISTS STUDY ROCKS AND FOSSILS? 258

- The Fossil Record 259

■ People Matter: Dr. Paul Sereno, National Geographic Explorer-in-Residence 259

### 16.4 HOW IS THE AGE OF ROCKS AND FOSSILS MEASURED? 260

- Finding a Missing Link 260

### 16.5 HOW HAS EARTH CHANGED OVER GEOLOGIC TIME? 262

### 16.6 WHAT IS THE GEOLOGIC TIME SCALE? 264



**16.7 WHAT EVIDENCE DOES EVOLUTION LEAVE IN BODY FORM? 266**

Morphological Divergence 266

Morphological Convergence 266

**16.8 HOW DO SIMILARITIES IN DNA AND PROTEIN REFLECT EVOLUTION? 268**

**16.9 APPLICATION: REFLECTIONS OF A DISTANT PAST 269**

**17 Processes of Evolution**

**17.1 WHAT IS MICROEVOLUTION? 274**

Variation in Shared Traits 274

An Evolutionary View of Mutations 274

Allele Frequencies 275

**17.2 HOW DO WE KNOW WHEN A POPULATION IS EVOLVING? 276**

Genetic Equilibrium 276

Applying the Hardy–Weinberg Law 276

Real-World Situations 277

**17.3 HOW DO ALLELE FREQUENCIES CHANGE? 277**

**17.4 WHAT IS THE EFFECT OF DIRECTIONAL SELECTION? 278**

The Peppered Moth 278

Warfarin-Resistant Rats 278

**17.5 WHAT TYPES OF NATURAL SELECTION FAVOR INTERMEDIATE OR EXTREME FORMS OF TRAITS? 280**

Stabilizing Selection 280

Disruptive Selection 281

**17.6 HOW DOES NATURAL SELECTION MAINTAIN DIVERSITY? 282**

Survival of the Sexiest 282

Maintaining Multiple Alleles 283

**17.7 WHAT MECHANISMS OTHER THAN NATURAL SELECTION AFFECT ALLELE FREQUENCIES? 284**

Genetic Drift 284

Bottlenecks and the Founder Effect 284

Gene Flow 285

**17.8 HOW DO SPECIES ATTAIN AND MAINTAIN SEPARATE IDENTITIES? 286**

Mechanisms of Reproductive Isolation 286

Temporal Isolation 286

Ecological Isolation 286

Behavioral Isolation 286

Mechanical Isolation 287

Gamete Incompatibility 287

Hybrid Inviability 287

Hybrid Sterility 287

**17.9 WHAT IS ALLOPATRIC SPECIATION? 288**

Speciation in Archipelagos 288

**17.10 CAN SPECIATION OCCUR WITHOUT A PHYSICAL BARRIER TO GENE FLOW? 290**

Sympatric Speciation 290

Parapatric Speciation 291

■ People Matter: Dr. Julia J. Day, National Geographic Grantee 291

**17.11 WHAT IS MACROEVOLUTION? 292**

Patterns of Macroevolution 292

Stasis 292

Exaptation 292

Mass Extinctions 292

Adaptive Radiation 292

Coevolution 293

Evolutionary Theory 293

**17.12 WHY DO WE STUDY EVOLUTIONARY HISTORY? 294**

Cladistics 295

**17.13 HOW CAN WE USE WHAT WE LEARN ABOUT EVOLUTIONARY HISTORY? 296**

**17.14 APPLICATION: DIRECTIONAL SELECTION: SUPERBAD SUPERBUGS 297**

**18 Life's Origin and Early Evolution**

**18.1 WHAT WAS THE BUILDING MATERIAL FOR EARTH'S FIRST LIFE? 302**

Conditions on the Early Earth 302

Formation of Simple Organic Compounds 302

■ People Matter: Dr. Robert Ballard, National Geographic Explorer-in-Residence 303

**18.2 WHAT STEPS LED TO THE FORMATION OF THE FIRST CELLS? 304**

On the Road to Life 304

Origin of Metabolism 304

Origin of the Cell Membrane 304

Origin of the Genome 305

**18.3 WHAT DO WE KNOW ABOUT EARLY CELLS? 306**

Traits of the Universal Common Ancestor 306

Evidence of Early Prokaryotic Cells 306

Evidence of Early Eukaryotes 307

**18.4 HOW DID INCREASING OXYGEN AFFECT EARLY LIFE? 307**

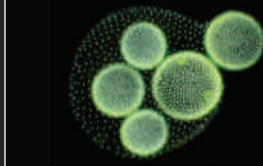
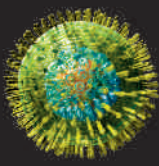
**18.5 HOW DID EUKARYOTIC ORGANELLES ARISE? 308**

Origin of the Nucleus 308

Origin of Mitochondria and Chloroplasts 308

**18.6 WHAT HAPPENED DURING THE PRECAMBRIAN? 310**

**18.7 APPLICATION: LIFE IN EXTREME HABITATS 311**



## UNIT IV EVOLUTION AND BIODIVERSITY

### 19 Viruses, Bacteria, and Archaea

#### 19.1 WHAT ARE VIRUSES? 316

Viral Characteristics 316

Viral Replication 316

    Bacteriophage Replication 316

    HIV Replication 317

#### 19.2 HOW DO VIRUSES AFFECT HUMAN HEALTH? 318

■ People Matter: Dr. Nathan Wolfe, Virologist 318

Common Viral Diseases 318

Emerging Viral Diseases 318

Viral Recombination 319

#### 19.3 HOW DO VIRUSES AND VIROIDS AFFECT PLANTS? 319

#### 19.4 HOW ARE BACTERIA AND ARCHAEA SIMILAR? 320

Cell Size and Structure 320

Reproduction and Gene Exchange 320

Metabolic Diversity 321

#### 19.5 WHAT ARE SOME MAJOR BACTERIAL LINEAGES? 322

Oxygen-Producing Cyanobacteria 322

Highly Diverse Proteobacteria 322

Thick-Walled Gram Positives 323

Spiral-Shaped Spirochetes 323

#### 19.6 HOW DO BACTERIA AFFECT HUMAN HEALTH? 324

Normal Flora 324

Toxins and Disease 324

#### 19.7 HOW WERE ARCHAEA DISCOVERED? 325

#### 19.8 WHERE DO ARCHAEA LIVE? 326

#### 19.9 APPLICATION: SHARING VIRUSES 327

### 20 The Protists

#### 20.1 WHAT ARE PROTISTS? 332

#### 20.2 WHAT ARE FLAGELLATED PROTOZOANS? 333

Anaerobic Flagellates 333

Trypanosomes and Euglenoids 333

#### 20.3 WHAT ARE RHIZARIANS? 334

Chalky or Silica-Shelled Cells 334

Rhizarian Remains 334

#### 20.4 WHAT ARE ALVEOLATES? 335

Ciliated Cells 335

Whirling Dinoflagellates 335

#### 20.5 HOW DOES MALARIA AFFECT HUMAN HEALTH? 336

■ People Matter: Ken Banks,  
National Geographic Explorer 336

#### 20.6 WHAT ARE STRAMENOPILES? 337

Diatoms and Brown Algae 337

Water Molds 337

#### 20.7 WHICH PROTISTS ARE CLOSEST TO PLANTS? 338

Red Algae 338

Green Algae 338

#### 20.8 WHAT ARE AMOEBOZOANS? 340

Amoebas 340

Slime Molds 340

#### 20.9 WHICH PROTISTS ARE CLOSEST TO ANIMALS? 341

#### 20.10 APPLICATION: ALGAL BLOOMS 341

### 21 Plant Evolution

#### 21.1 HOW DID PLANTS ADAPT TO LIFE ON LAND? 346

Structural Adaptations 346

Life Cycle Changes 346

Pollen and Seeds 347

#### 21.2 WHAT ARE NONVASCULAR PLANTS? 348

Mosses 348

Liverworts and Hornworts 349

#### 21.3 WHAT ARE SEEDLESS VASCULAR PLANTS? 350

Ferns and Close Relatives 350

Lycophytes 351

#### 21.4 HOW HAVE VASCULAR PLANTS CHANGED OVER TIME? 352

From Tiny Branchers to Coal Forests 352

Rise of the Seed Plants 352

■ People Matter: Jeff Benca,  
National Geographic Explorer 353

#### 21.5 WHAT ARE GYMNOSPERMS? 354

Conifers 354

Lesser Known Lineages 355

#### 21.6 WHAT ARE ANGIOSPERMS? 356

Flowers and Fruits 356

Major Lineages 357

#### 21.7 WHY ARE ANGIOSPERMS SO DIVERSE AND WIDESPREAD? 358

Accelerated Life Cycle 358

Partnerships With Pollinators 358

Animal-Dispersed Fruits 358

#### 21.8 APPLICATION: SAVING SEEDS 359



## 22 Fungi

### 22.1 WHAT IS A FUNGUS? 364

- Absorptive Feeders 364
- Filamentous Structure 364
- Spore Producers 364
- Five Major Subgroups 365

### 22.2 HOW DO LIFE CYCLES DIFFER AMONG FUNGAL GROUPS? 366

### 22.3 WHAT ECOLOGICAL ROLES DO FUNGI PLAY? 368

- Nature's Recyclers 368
- Beneficial Partners 368
- Parasites and Pathogens 369
  - People Matter: Dr. DeeAnn Reeder, National Geographic Grantee 369

### 22.4 HOW DO WE USE FUNGI? 370

### 22.5 APPLICATION: SPREAD OF FUNGAL PATHOGENS 371

## 23 Animals I: Major Invertebrate Groups

### 23.1 HOW HAVE ANIMAL BODY PLANS EVOLVED? 376

### 23.2 HOW DID ANIMALS ARISE AND DIVERSIFY? 378

- Colonial Origins 378
- Early Evolution 378
- An Explosion of Diversity 378

### 23.3 WHAT ARE SPONGES? 379

### 23.4 WHAT ARE CNIDARIANS? 380

- People Matter: Dr. David Gruber, National Geographic Explorer 381

### 23.5 WHAT IS A FLATWORM? 382

- Free-Living Flatworms 382
- Parasitic Flatworms 383

### 23.6 WHAT ARE ANNELIDS? 384

- Marine Polychaetes 384
- Leeches 384
- Earthworms 384

### 23.7 WHAT ARE MOLLUSKS? 386

- Gastropods 386
- Bivalves 386
- Cephalopods 387

### 23.8 WHAT ARE ROUNDWORMS? 388

### 23.9 WHAT ARE ARTHROPODS? 389

### 23.10 WHAT ARE THE MAIN KINDS OF ARTHROPODS? 390

- Chelicerates 390

- Myriapods 390
- Crustaceans 390
- Insects 391

### 23.11 WHAT MAKES INSECTS SO DIVERSE AND IMPORTANT? 392

- Characteristics of Insects 392
- Insect Ecology 392
- Health and Economic Effects 393

### 23.12 WHAT ARE ECHINODERMS? 394

### 23.13 APPLICATION: MEDICINES FROM THE SEA 395

## 24 Animals II: The Chordates

### 24.1 WHAT ARE CHORDATES? 400

- Chordate Characteristics 400
- Invertebrate Chordates 400
- Overview of Chordate Evolution 400

### 24.2 WHAT ARE FISHES? 402

- Jawless Fishes 402
- Cartilaginous Fishes 402
- Bony Fishes 403

### 24.3 WHAT ARE AMPHIBIANS? 404

- The First Tetrapods 404
- Modern Amphibians 404
- Declining Diversity 405

### 24.4 WHAT ARE AMNIOTES? 406

### 24.5 WHAT ARE THE NONBIRD REPTILES? 407

### 24.6 WHAT ARE BIRDS? 408

### 24.7 WHAT ARE MAMMALS? 409

- Furry or Hairy Milk Makers 409
- Modern Subgroups 409

### 24.8 WHAT ARE PRIMATES? 410

- Primate Characteristics 410
- Modern Subgroups 410

### 24.9 HOW DO HUMANS AND APES DIFFER? 412

### 24.10 WHAT WERE EARLY HOMININS LIKE? 413

### 24.11 WHAT SPECIES ARE IN THE GENUS *HOMO*? 414

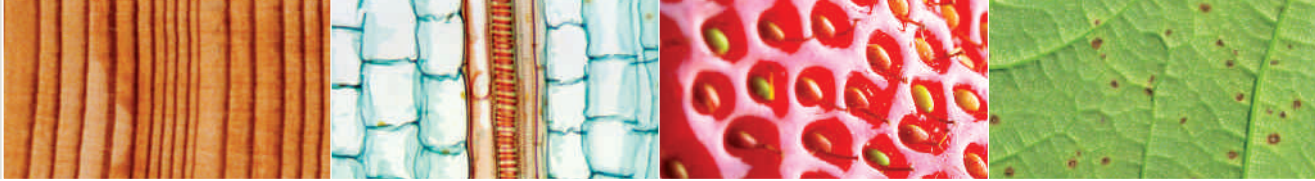
- Early *Homo* Species 414
- Neanderthals 414
- Flores Hominins 415
- Homo Sapiens* 415

- People Matter: Dr. Louise Leakey and Dr. Meave Leakey, National Geographic Explorers-in-Residence 415

### 24.12 WHAT DO OUR GENES REVEAL ABOUT HUMAN ORIGIN AND DISPERSAL? 416

### 24.13 APPLICATION: THE DOWNSIDE OF WALKING UPRIGHT 417





## UNIT V HOW PLANTS WORK

### 25 Plant Tissues

#### 25.1 WHAT IS THE BASIC STRUCTURE OF A FLOWERING PLANT? 422

- People Matter: Dr. Mark Olson, National Geographic Explorer 423

#### 25.2 WHAT ARE THE MAIN TYPES OF PLANT TISSUES? 424

- Simple Tissues 424
- Complex Tissues 424

#### 25.3 HOW ARE PLANT TISSUES ORGANIZED INSIDE STEMS? 426

- Variations 426
  - Stolons 426
  - Bulbs 427
  - Corms 427
  - Tubers 427
  - Rhizomes 427
  - Cladodes 427

#### 25.4 HOW DOES A LEAF'S STRUCTURE CONTRIBUTE TO ITS FUNCTION? 428

- Internal Structure 428

#### 25.5 WHAT IS THE BASIC STRUCTURE AND FUNCTION OF ROOTS? 430

- People Matter: Dr. Jon Keeley, National Geographic Grantee 431

#### 25.6 HOW DOES GROWTH OCCUR IN PLANTS? 432

- Primary Growth 432
- Secondary Growth 432

#### 25.7 WHAT ARE TREE RINGS? 434

#### 25.8 APPLICATION: SEQUESTERING CARBON IN FORESTS 435

### 26 Plant Nutrition and Transport

#### 26.1 WHERE DO PLANTS GET THE NUTRIENTS THEY REQUIRE? 440

- Properties of Soil 440
- How Soils Change 440

- People Matter: Dr. Jerry Glover, National Geographic Explorer 441

#### 26.2 HOW DO PLANT ROOTS ABSORB WATER AND NUTRIENTS? 442

#### 26.3 WHAT MUTUALISMS AFFECT ROOT FUNCTION? 443

#### 26.4 HOW DOES WATER MOVE THROUGH XYLEM? 444

- Cohesion–Tension Theory 444

#### 26.5 HOW DO LAND PLANTS CONSERVE WATER? 446

#### 26.6 HOW DO SUGARS MOVE THROUGH PHLOEM? 446

- Pressure Flow Theory 446

#### 26.7 APPLICATION: LEAFY CLEANUP 448

### 27 Plant Reproduction and Development

#### 27.1 WHAT ARE THE STRUCTURE AND FUNCTION OF FLOWERS? 454

- Pollination 454

#### 27.2 HOW DOES SEXUAL REPRODUCTION OCCUR IN A FLOWERING PLANT? 456

#### 27.3 HOW DO SEEDS AND FRUITS DEVELOP? 458

- The Embryo Sporophyte Forms 458
- Fruits 458

#### 27.4 WHAT HAPPENS DURING EARLY PLANT DEVELOPMENT? 460

- Breaking Dormancy 460
- After Germination 461

#### 27.5 HOW DO PLANTS REPRODUCE ASEXUALLY? 462

- Agricultural Applications 462

#### 27.6 WHAT REGULATES GROWTH AND DEVELOPMENT IN PLANTS? 463

#### 27.7 WHAT ARE SOME EFFECTS OF AUXIN AND CYTOKININ? 464

#### 27.8 HOW DOES GIBBERELLIN AFFECT PLANT GROWTH? 465

#### 27.9 WHAT ARE SOME EFFECTS OF ABSCISIC ACID AND ETHYLENE? 466

- Abscisic Acid 466
- Ethylene 467

#### 27.10 HOW DO ENVIRONMENTAL CUES TRIGGER GROWTH RESPONSES IN PLANTS? 468

- Environmental Triggers 468
  - Gravity 468
  - Light 468
  - Contact 469

#### 27.11 HOW DO PLANTS SENSE AND RESPOND TO RECURRING ENVIRONMENTAL CHANGE? 470

- Daily Change 470
- Seasonal Change 470

#### 27.12 HOW DO PLANTS RESPOND TO STRESS? 472

- People Matter: Dr. Grace Gobbo, National Geographic Explorer 473

#### 27.13 APPLICATION: PLIGHT OF THE HONEYBEE 474

- People Matter: Dr. Dino Martins, National Geographic Explorer 475



## UNIT VI HOW ANIMALS WORK

### 28 Animal Tissues and Organ Systems

#### 28.1 HOW ARE ANIMAL BODIES ORGANIZED? 480

Levels of Organization 480

An Internal Environment 480

#### 28.2 WHAT FACTORS CONSTRAIN ANIMAL BODY PLANS? 481

#### 28.3 WHAT IS EPITHELIAL TISSUE? 482

General Characteristics 482

Types of Epithelial Tissue 482

- People Matter: Dr. Brenda Larison, National Geographic Explorer 483

#### 28.4 WHAT ARE CONNECTIVE TISSUES? 484

General Characteristics 484

Types of Connective Tissue 484

#### 28.5 WHAT ARE MUSCLE TISSUES? 486

Skeletal Muscle 486

Cardiac Muscle 486

Smooth Muscle 486

#### 28.6 WHAT IS NERVOUS TISSUE? 487

#### 28.7 WHERE ARE VERTEBRATE ORGANS AND HOW DO THEY INTERACT? 488

Organs and Organ Systems 488

#### 28.8 HOW DOES SKIN STRUCTURE AFFECT ITS FUNCTION? 490

Components of Human Skin 490

Sun and the Skin 491

Cultured Skin Products 491

#### 28.9 HOW DO ORGAN SYSTEMS INTERACT IN HOMEOSTASIS? 492

#### 28.10 APPLICATION: GROWING REPLACEMENT TISSUES 493

### 29 Neural Control

#### 29.1 WHAT ARE THE TYPES OF NERVOUS SYSTEMS? 498

Nerve Net 498

Getting a Head 498

The Vertebrate Nervous System 499

#### 29.2 HOW DOES NEURON STRUCTURE RELATE TO FUNCTION? 500

#### 29.3 WHAT IS MEMBRANE POTENTIAL? 501

Resting Potential 501

Action Potential 501

#### 29.4 WHAT HAPPENS DURING AN ACTION POTENTIAL? 502

A Positive Feedback Mechanism 502

A Maximum Value 502

Conduction Along an Axon 503

#### 29.5 WHAT HAPPENS AT A SYNAPSE? 504

Transmission, Reception, Transduction 504

Signal and Receptor Variety 504

Synaptic Integration 505

#### 29.6 HOW DO DRUGS ACT AT SYNAPSES? 505

#### 29.7 WHAT IS THE PERIPHERAL NERVOUS SYSTEM? 506

Somatic Nerves 506

Autonomic Nerves 506

#### 29.8 WHAT ARE THE ORGANS OF THE CENTRAL NERVOUS SYSTEM? 508

#### 29.9 WHAT ARE THE FEATURES OF A VERTEBRATE BRAIN? 510

- People Matter: Dr. Diana Reiss, National Geographic Explorer 511

#### 29.10 WHAT ARE THE FUNCTIONS OF THE CEREBRAL CORTEX? 512

#### 29.11 WHAT BRAIN REGIONS GOVERN EMOTION AND MEMORY? 513

The Emotional Brain 513

Making Memories 513

#### 29.12 HOW DO SCIENTISTS STUDY HUMAN BRAINS? 514

#### 29.13 APPLICATION: IMPACTS OF CONCUSSIONS 515

### 30 Sensory Perception

#### 30.1 HOW DO ANIMALS DETECT AND PERCEIVE SENSORY STIMULI? 520

The Role of Sensory Receptors 520

Assessing Sensory Input 520

Sensation Versus Perception 520

#### 30.2 WHAT ARE THE GENERAL SENSES? 521

Somatic and Visceral Sensation 521

Pain and Pain Relief 521

#### 30.3 WHAT ARE THE CHEMICAL SENSES? 522

Sense of Smell 522

Sense of Taste 523

#### 30.4 HOW DO ANIMALS SEE? 524

Diversity of Visual Systems 524

Anatomy of the Human Eye 524

Focusing Mechanisms 525

#### 30.5 HOW DOES THE HUMAN RETINA FUNCTION? 526

#### 30.6 WHAT CAUSES COMMON VISUAL DISORDERS? 527

#### 30.7 HOW DO ANIMALS HEAR? 528

Properties of Sound 528

Vertebrate Ears 528



- People Matter: Dr. Fernando Montealegre-Z, National Geographic Grantee 529

- 30.8 WHAT IS THE SENSE OF BALANCE?** 530
- 30.9 APPLICATION: COCHLEAR IMPLANTS** 531

## 31 Endocrine Control

- 31.1 WHAT ARE ANIMAL HORMONES?** 536
  - Categories of Hormones 536
  - Hormone Receptor Function 537
- 31.2 WHAT ARE THE COMPONENTS OF THE HUMAN ENDOCRINE SYSTEM?** 538
- 31.3 HOW DOES THE HYPOTHALAMUS INTERACT WITH THE PITUITARY GLAND?** 540
  - Posterior Pituitary Function 540
  - Anterior Pituitary Function 541
  - Hormonal Growth Disorders 541
- 31.4 WHAT IS THE ROLE OF THE PINEAL GLAND?** 542
- 31.5 WHAT ARE THE THYROID AND PARATHYROID GLANDS?** 542
  - Metabolic and Developmental Effects of Thyroid Hormone 542
  - Hormonal Regulation of Blood Calcium Level 543
- 31.6 WHAT ARE THE ROLES OF THE ADRENAL GLANDS?** 544
  - Hormones, Stress, and Health 544
- 31.7 WHAT ARE SEX HORMONES?** 545
- 31.8 HOW DOES THE PANCREAS REGULATE BLOOD SUGAR?** 546
- 31.9 DO INVERTEBRATES HAVE HORMONES?** 547
- 31.10 APPLICATION: ENDOCRINE DISRUPTERS** 548
  - People Matter: Dr. Tyrone Hayes, National Geographic Explorer 549

## 32 Structural Support and Movement

- 32.1 HOW DO ANIMALS MOVE?** 554
  - People Matter: Dr. Kakani Katija Young, National Geographic Explorer 555
- 32.2 WHAT IS A SKELETON?** 556
  - Invertebrate Skeletons 556
  - The Vertebrate Endoskeleton 556
- 32.3 WHAT ARE THE FUNCTIONS OF BONE?** 558
  - Bone Structure and Function 558
  - Bone Formation and Turnover 558
  - Joints: Where Bones Meet 559
- 32.4 WHAT ARE THE FUNCTIONS OF SKELETAL MUSCLE?** 560

- 32.5 WHAT ARE THE COMPONENTS OF SKELETAL MUSCLE?** 561
- 32.6 HOW DO SARCOMERES CONTRACT?** 562
- 32.7 WHAT CONTROLS MUSCLE CONTRACTION?** 563
  - Motor Cortex and Motor Neurons 563
  - Motor Units 563
- 32.8 HOW DO MUSCLES FUEL THEIR CONTRACTIONS?** 564
  - Energy-Releasing Pathways 564
  - Types of Muscle Fibers 564
- 32.9 APPLICATION: EXERCISE AND INACTIVITY** 565

## 33 Circulation

- 33.1 HOW DO ANIMALS MOVE MATERIALS TO AND FROM BODY CELLS?** 570
  - Open and Closed Circulatory Systems 570
  - Evolution of Vertebrate Circulatory Systems 570
- 33.2 WHAT IS THE ROUTE OF BLOOD FLOW IN A HUMAN BODY?** 572
  - The Pulmonary Circuit 572
  - The Systemic Circuit 572
- 33.3 HOW DOES THE HUMAN HEART FUNCTION?** 574
  - The Cardiac Cycle 574
  - Setting the Pace 575
- 33.4 WHAT ARE THE FUNCTIONS AND COMPONENTS OF BLOOD?** 576
  - Plasma 576
  - Cellular Components 576
    - Red Blood Cells 576
    - White Blood Cells 576
    - Platelets 577
- 33.5 HOW DOES BLOOD TRAVEL TO TISSUES?** 578
  - Rapid Transport in Arteries 578
  - Adjusting Flow at Arterioles 578
- 33.6 WHAT IS BLOOD PRESSURE?** 579
- 33.7 HOW DOES BLOOD EXCHANGE SUBSTANCES WITH BODY CELLS?** 580
- 33.8 HOW DOES BLOOD RETURN TO THE HEART?** 581
- 33.9 WHAT CAUSES COMMON HEART PROBLEMS?** 582
  - Arrhythmias 582
  - Atherosclerosis and Heart Disease 582
- 33.10 WHAT ARE THE FUNCTIONS OF THE LYMPHATIC SYSTEM?** 584
  - Lymph Vascular System 584
  - Lymphoid Organs and Tissues 584
- 33.11 APPLICATION: WHEN THE HEART STOPS** 585



## 34 Immunity

- 34.1 WHAT IS IMMUNITY?** 590  
 Integrated Responses to Threats 590  
 Three Lines of Defense 590  
 The Defenders 591
- 34.2 WHAT KEEPS MICROORGANISMS ON THE OUTSIDE OF THE BODY?** 592  
 Normal Flora 592  
 Barriers to Infection 593
- 34.3 WHAT HAPPENS AFTER ANTIGEN IS DETECTED INSIDE THE BODY?** 594  
 Complement 594  
 Phagocytosis 594  
 Inflammation 594  
 Fever 595
- 34.4 WHAT ARE ANTIGEN RECEPTORS?** 596  
 Antigen Receptor Diversity 597
- 34.5 WHAT IS AN IMMUNE RESPONSE?** 598  
 Two Arms of Adaptive Immunity 598  
 Self/Nonself Recognition 598  
 Specificity 598  
 Diversity 598  
 Memory 598  
 Intercepting Antigen 598
- 34.6 WHAT HAPPENS DURING AN ANTIBODY-MEDIATED IMMUNE RESPONSE?** 600
- 34.7 HOW DOES ABO BLOOD TYPING WORK?** 601
- 34.8 WHAT HAPPENS DURING A CELL-MEDIATED IMMUNE RESPONSE?** 602  
 The Role of Cytotoxic T Cells 602  
 The Role of NK Cells 603  
 ■ People Matter: Dr. Mark Merchant, National Geographic Grantee 603
- 34.9 WHAT HAPPENS WHEN THE IMMUNE SYSTEM MALFUNCTIONS?** 604  
 Allergies 604  
 Overly Vigorous Responses 604  
 Autoimmune Disorders 605  
 Immunodeficiency 605
- 34.10 WHAT IS AIDS?** 606  
 Transmission and Treatment 606
- 34.11 HOW DO VACCINES WORK?** 607
- 34.12 APPLICATION: FRANKIE'S LAST WISH** 608

## 35 Respiration

- 35.1 WHAT IS RESPIRATION?** 614  
 Sites of Gas Exchange 614  
 Factors Affecting Gas Exchange 614

- 35.2 WHAT ARE INVERTEBRATE RESPIRATORY ORGANS?** 615
- 35.3 WHAT ARE VERTEBRATE RESPIRATORY ORGANS?** 616  
 Fish Gills 616  
 Tetrapod Lungs 616
- 35.4 WHAT ARE THE COMPONENTS OF THE HUMAN RESPIRATORY SYSTEM?** 618  
 The Airways 618  
 The Lungs 619  
 Muscles of Respiration 619
- 35.5 HOW DO WE BREATHE?** 620  
 The Respiratory Cycle 620  
 Control of Breathing 620  
 Choking—A Blocked Airway 621
- 35.6 HOW ARE GASES EXCHANGED AND TRANSPORTED?** 622  
 The Respiratory Membrane 622  
 Oxygen Transport 622  
 Carbon Dioxide Transport 623  
 ■ People Matter: Dr. Cynthia Beall, National Geographic Grantee 623
- 35.7 WHAT CAUSES RESPIRATORY DISEASES AND DISORDERS?** 624  
 Interrupted Breathing 624  
 Infectious Diseases 624  
 Bronchitis, Asthma, and Emphysema 624
- 35.8 APPLICATION: EFFECTS OF SMOKING** 625

## 36 Digestion and Human Nutrition

- 36.1 HOW DO ANIMALS PROCESS THEIR FOOD?** 630  
 Digestive Tasks 630  
 Sac or Tube? 630  
 Processing Specific Foods 631
- 36.2 WHAT ARE THE COMPONENTS OF THE HUMAN DIGESTIVE SYSTEM?** 632
- 36.3 WHAT IS THE ROLE OF THE STOMACH?** 634  
 Structure and Function 634  
 Stomach Disorders 634
- 36.4 HOW DOES THE STRUCTURE OF THE SMALL INTESTINE ENHANCE ITS FUNCTION?** 635
- 36.5 HOW ARE COMPONENTS OF FOOD BROKEN DOWN AND ABSORBED?** 636  
 Carbohydrate Digestion 636  
 Protein Digestion 636  
 Fat Digestion 636  
 Water Uptake 637



### 36.6 WHAT ARE THE FUNCTIONS OF THE LARGE INTESTINE? 638

Structure and Function 638

### 36.7 HOW DOES THE BODY USE CARBOHYDRATES, FATS, AND PROTEINS? 639

### 36.8 HOW DOES THE BODY USE VITAMINS AND MINERALS? 640

- People Matter: Dr. Christopher Golden, National Geographic Explorer 641

### 36.9 WHAT ARE COMPONENTS OF A HEALTHY DIET? 642

Fruits, Vegetables, and Whole Grains 642

Heart-Healthy Oils 642

Lean Meat and Low-Fat Dairy 643

Minimal Added Salt and Sugar 643

### 36.10 WHAT DETERMINES OUR WEIGHT? 644

### 36.11 APPLICATION: THE OBESITY EPIDEMIC 645

## 37 Maintaining the Internal Environment

### 37.1 HOW DO ANIMALS MAINTAIN THE COMPOSITION OF THEIR BODY FLUIDS? 650

Composition and Components of Body Fluids 650

Organs That Adjust Body Fluids 650

### 37.2 HOW DOES THE HUMAN URINARY SYSTEM FUNCTION? 652

Components of the System 652

Introducing Nephrons 652

Overview of Nephron Structure 652

Blood Vessels Associated With Nephrons 653

### 37.3 HOW DOES URINE FORM? 654

Filtration, Reabsorption, and Secretion 654

Concentrating the Urine 654

### 37.4 WHAT CAUSES KIDNEY PROBLEMS? 656

### 37.5 WHAT CAN URINE TESTS DETECT? 657

- People Matter: Dr. Cheryl Knott, National Geographic Explorer 657

### 37.6 HOW DO ANIMALS REGULATE BODY TEMPERATURE? 658

Heat Gains and Losses 658

Modes of Thermoregulation 658

Vertebrate Responses to Cold 658

Vertebrate Responses to Heat 659

### 37.7 HOW DO HUMANS RESPOND TO HEAT AND COLD? 660

### 37.8 APPLICATION: GENETIC ADAPTATION TO DIFFERING CLIMATES 661

## 38 Reproduction and Development

### 38.1 HOW DOES ANIMAL REPRODUCTION VARY? 666

Asexual or Sexual? 666

Gametes and Fertilization 666

Nourishing Developing Young 667

### 38.2 WHAT ARE THE STAGES OF ANIMAL DEVELOPMENT? 668

Gametes Form and Unite 668

Cleavage 668

Gastrulation 668

The Body Takes Shape 668

### 38.3 HOW DO ANIMAL TISSUES AND ORGANS FORM? 670

Cell Differentiation 670

Embryonic Induction 670

Apoptosis 671

Cell Migrations 671

### 38.4 HOW DOES DEVELOPMENT EVOLVE? 672

A General Model for Animal Development 672

Constraints on Body Plans 672

### 38.5 WHAT ARE THE STAGES OF HUMAN DEVELOPMENT? 673

### 38.6 WHAT ARE FUNCTIONS OF A MAN'S REPRODUCTIVE ORGANS? 674

- People Matter: Dr. Stewart C. Nicol, National Geographic Grantee 675

### 38.7 WHAT ARE THE FUNCTIONS OF A WOMAN'S REPRODUCTIVE ORGANS? 676

Female Reproductive Anatomy 676

Egg Production and Release 677

### 38.8 HOW DO HORMONES AFFECT THE FEMALE REPRODUCTIVE CYCLE? 678

Ovarian and Menstrual Cycles 678

From Puberty to Menopause 679

Estrous Cycles 679

### 38.9 HOW DOES HUMAN FERTILIZATION OCCUR? 680

Sexual Intercourse 680

The Sperm's Journey 680

Fertilization 680

### 38.10 HOW DO PEOPLE AVOID PREGNANCY? 682

### 38.11 WHAT ARE SEXUALLY TRANSMITTED DISEASES? 683

### 38.12 HOW DOES A HUMAN EMBRYO FORM? 684

### 38.13 WHEN DO HUMAN ORGANS FORM AND BEGIN TO FUNCTION? 686

### 38.14 WHAT IS THE ROLE OF THE HUMAN PLACENTA? 688

An Essential Life Line 688

Effects of Maternal Health and Behavior 688



**38.15 HOW IS A CHILD BORN AND NOURISHED?** 690

Childbirth 690

Lactation 690

**38.16 APPLICATION: REPRODUCTIVE TECHNOLOGY** 691

**UNIT VII PRINCIPLES OF ECOLOGY**

**39 Animal Behavior**

**39.1 HOW DO GENES INFLUENCE BEHAVIOR?** 696

Sensing and Responding 696

Variation Within a Species 696

Variation Among Species 697

Epigenetic Effects 697

**39.2 WHAT IS THE DIFFERENCE BETWEEN INSTINCTIVE AND LEARNED BEHAVIORS?** 698

Instinctive Behavior 698

Time-Sensitive Learning 698

Conditioned Responses 698

Other Types of Learning 699

**39.3 HOW AND WHY DO ANIMALS COMMUNICATE?** 700

- People Matter: Dr. Isabelle Charrier, National Geographic Explorer 701

**39.4 WHAT FACTORS AFFECT REPRODUCTIVE BEHAVIOR?** 702

Mating Systems 702

Parental Care 703

**39.5 WHY DO SOME ANIMALS GROUP TOGETHER?** 704

Benefits of Groups 704

Costs of Group Living 705

Dominance Hierarchies 705

**39.6 HOW DID EUSOCIAL ANIMALS EVOLVE?** 706

**39.7 APPLICATION: ALARMING BEE BEHAVIOR** 707

**40 Population Ecology**

**40.1 HOW DO WE DESCRIBE POPULATIONS?** 712

Size, Density, and Distribution 712

Sampling a Population 712

- People Matter: Dr. Karen DeMatteo, National Geographic Grantee 713

**40.2 WHY DOES THE SIZE OF A POPULATION CHANGE?** 714

Immigration and Emigration 714

Zero to Exponential Growth 714

Biotic Potential 715

**40.3 WHAT CONSTRAINS POPULATION GROWTH?** 716

Density-Dependent Factors 716

Logistic Growth 716

Density-Independent Factors 716

**40.4 HOW DO LIFE HISTORY PATTERNS VARY?** 718

Timing of Births and Deaths 718

*r*-Selection and *K*-Selection 718

**40.5 HOW DOES PREDATION AFFECT LIFE HISTORY TRAITS?** 720

An Experimental Study 720

Collapse of a Fishery 721

**40.6 HOW HAS THE SIZE OF THE HUMAN POPULATION CHANGED OVER TIME?** 722

Expansions and Innovations 722

Fertility and Future Growth 722

**40.7 HOW DOES INDUSTRIALIZATION AFFECT HUMAN POPULATION GROWTH?** 724

A Demographic Transition 724

Development and Consumption 724

**40.8 APPLICATION: A HONKIN' MESS** 725

**41 Community Ecology**

**41.1 WHAT FACTORS AFFECT COMMUNITY STRUCTURE?** 730

**41.2 HOW DO SPECIES COOPERATE?** 731

**41.3 HOW DO SPECIES COMPETE?** 732

Types of Competition 732

Competitive Exclusion 732

Resource Partitioning 733

- People Matter: Dr. Nayuta Yamashita, National Geographic Grantee 733

**41.4 HOW DO PREDATORS AND THEIR PREY INTERACT?** 734

Predator and Prey Abundance 734

Predator–Prey Arms Races 734

Plant–Herbivore Arms Race 735

**41.5 HOW DO PARASITES AND THEIR HOSTS INTERACT?** 736

Parasitism 736

Parasitoids 736

Biological Pest Control 737

Brood Parasitism 737

**41.6 HOW DO COMMUNITIES CHANGE OVER TIME?** 738

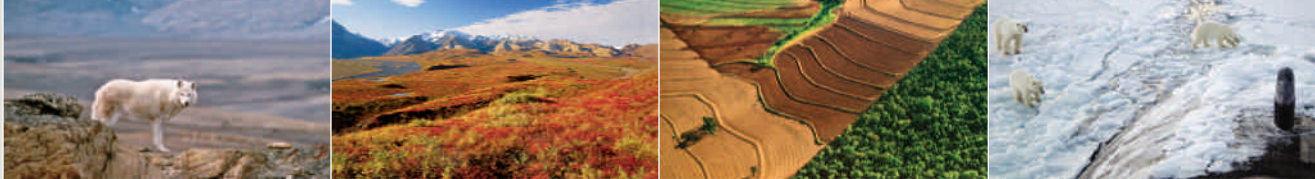
Successional Change 738

Effects of Disturbance 739

**41.7 HOW CAN A SINGLE SPECIES ALTER COMMUNITY STRUCTURE?** 740

Keystone Species 740

Exotic Species 740



- 41.8 HOW MANY SPECIES WILL A COMMUNITY HOLD?** 742
- 41.9 APPLICATION: FIGHTING FOREIGN FIRE ANTS** 743

## 42 Ecosystems

- 42.1 HOW DO ENERGY AND NUTRIENTS MOVE THROUGH AN ECOSYSTEM?** 748
  - Producers and Consumers 748
  - Energy Flow, Nutrient Cycling 748
  - Trophic Structure 748
- 42.2 HOW DO FOOD CHAINS INTERCONNECT?** 750
- 42.3 WHAT ARE ECOLOGICAL PYRAMIDS?** 751
- 42.4 WHAT IS A BIOGEOCHEMICAL CYCLE?** 752
- 42.5 WHAT IS THE WATER CYCLE?** 752
  - People Matter: Jonathan Waterman, National Geographic Grantee 753
- 42.6 HOW DOES CARBON MOVE THROUGH ECOSYSTEMS?** 754
  - The Carbon Cycle 754
  - The Greenhouse Effect 755
- 42.7 HOW DOES NITROGEN MOVE THROUGH ECOSYSTEMS?** 756
  - The Nitrogen Cycle 756
  - Alterations to the Cycle 757
- 42.8 HOW DOES PHOSPHORUS MOVE THROUGH ECOSYSTEMS?** 758
- 42.9 APPLICATION: TOXIC TRANSFERS** 759

## 43 The Biosphere

- 43.1 WHAT DETERMINES AIR CIRCULATION PATTERNS?** 764
  - Seasonal Effects 764
  - Air Circulation and Rainfall 764
  - Surface Wind Patterns 765
- 43.2 HOW DO CURRENTS AND LANDFORMS AFFECT CLIMATE?** 766
  - Ocean Currents 766
  - Regional Effects 766
- 43.3 WHAT ARE THE MAJOR BIOMES?** 768
  - Differences Among Biomes 768
  - Similarities Within a Biome 768
- 43.4 WHAT IS THE MOST PRODUCTIVE BIOME?** 769
- 43.5 WHAT TYPES OF FORESTS OCCUR IN COOLER CLIMATES?** 770
  - Temperate Deciduous Forests 770
  - Coniferous Forests 770

- 43.6 WHAT ARE THE FIRE-ADAPTED BIOMES?** 771
- 43.7 WHAT IS THE DRIEST BIOME?** 772
  - Adapted to Drought 772
  - Desert Crust 772
- 43.8 WHAT IS THE COLDEST BIOME?** 773
  - People Matter: Dr. Katey Walter Anthony, National Geographic Explorer 773
- 43.9 WHAT ARE THE MAIN TYPES OF FRESHWATER ECOSYSTEMS?** 774
  - Lakes 774
    - Nutrient Content and Succession 774
    - Seasonal Changes 774
  - Streams and Rivers 775
  - The Role of Dissolved Oxygen 775
- 43.10 WHAT ARE COASTAL ECOSYSTEMS?** 776
  - Coastal Wetlands 776
  - Rocky and Sandy Seashores 776
- 43.11 WHAT ARE CORAL REEFS?** 777
- 43.12 WHERE IS LIFE IN THE OPEN OCEAN?** 778
- 43.13 APPLICATION: EFFECTS OF EL NIÑO** 779

## 44 Human Effects on the Biosphere

- 44.1 WHY ARE SO MANY SPECIES THREATENED OR ENDANGERED?** 784
  - Causes of Species Decline 784
  - The Unknown Losses 785
    - People Matter: Dr. Paula Kahumbu, National Geographic Explorer 785
- 44.2 WHAT ARE THE EFFECTS OF DESERTIFICATION AND DEFORESTATION?** 786
  - Desertification 786
  - Deforestation 786
- 44.3 HOW DOES TRASH DEGRADE HABITATS?** 788
- 44.4 WHAT ARE THE EFFECTS OF ACID RAIN?** 789
- 44.5 WHAT ARE THE EFFECTS OF OZONE DEPLETION AND POLLUTION?** 790
  - Depletion of the Ozone Layer 790
  - Near-Ground Ozone Pollution 790
- 44.6 WHAT ARE THE EFFECTS OF GLOBAL CLIMATE CHANGE?** 791
- 44.7 WHAT IS CONSERVATION BIOLOGY?** 792
  - The Value of Biodiversity 792
  - Setting Priorities 792
  - Preservation and Restoration 793
- 44.8 HOW CAN WE REDUCE OUR IMPACT?** 794
- 44.9 APPLICATION: A LONG REACH** 795

- APPENDIX I** Periodic Table of the Elements
- APPENDIX II** The Amino Acids
- APPENDIX III** A Closer Look at Some Major Metabolic Pathways
- APPENDIX IV** A Plain English Map of the Human Chromosomes
- APPENDIX V** Restless Earth—Life's Changing Geologic Stage
- APPENDIX VI** Units of Measure
- APPENDIX VII** Answers to Self-Quizzes and Genetics Problems





# Preface



We wrote this book to provide an accessible and appealing introduction to the study of life. Most students who use it will not become biologists, but all can benefit from an enhanced understanding of biological processes. For example, knowing how cells and bodies work helps a person make informed decisions about nutrition, life-style, and medical care. Recognizing the breadth of biodiversity, the mechanisms by which it arises, and the ways in which species interact brings to light the threats posed by human-induced extinctions. Realizing how living and nonliving components of ecosystems interact makes it clear why human activities such as adding greenhouse gases to the atmosphere puts us and other species at risk.

Our quest to educate and edify is shared by the National Geographic Society, with whom we have partnered for this edition. You will see the fruits of this partnership throughout the text—in spectacular new photographs, informative illustrations, and text features that highlight the wide variety of work supported by the society.

## FEATURES OF THIS EDITION

### SETTING THE STAGE

Each chapter opens with a dramatic two-page photo spread. A brief Links to Earlier Concepts paragraph reminds students of relevant information that has been covered in previous chapters, and concise Key Concept statements summarize the current chapter's content. An eye-catching image that appears in icon form next to each key concept also occurs within a relevant section, as part of a visual message that threads through the chapter.

### CONCEPT SPREADS

The content of every chapter is organized as a series of Concepts, each explored in a section that is two pages or less. A section's Concept is reflected in its title, which is posed as a question that the student should be able to answer after reading the text. Bulleted sentences in the Take Home Message summarize and reinforce the Concept and supporting information provided in the section.

### PEOPLE MATTER

Our new People Matter feature illustrates the relevance of ongoing research, and also highlights the diversity of the modern scientific community. Individuals whose work is spotlighted in this feature include well-established scientists, young scientists who are just beginning their careers, and a few nonscientists; most are National Geographic Explorers or Grantees.

### ON-PAGE GLOSSARY

A new On-Page Glossary comprises boldface key terms introduced in each section. This section-by-section glossary offers definitions in alternate wording, and can also be used as a quick study aid. All glossary terms also appear in boldface in the Chapter Summary.

### EMPHASIS ON RELEVANCE

Each chapter ends with an Application section that explains a current topic in light of the chapter content. For example, in Chapter 29, students use what they just learned about neural control to understand how sports-induced concussions permanently injure the brain—which is under intense study by scientific and athletic communities at this writing. Each Application also relates to a core interest of the National Geographic Society: Education, Conservation, Exploration, Get Involved, or Sustainability.

### SELF-ASSESSMENT TOOLS

Many figure captions now include a Figure-It-Out Question and answer that allow students to quickly check their understanding of the illustration. At the end of each chapter, Self-Quiz and Critical Thinking Questions provide additional self-assessment material. A new chapter-end Data Analysis Activity sharpens analytical skills by asking the student to interpret data presented in graphic or tabular form. The data is related to the chapter material, and is from a published scientific study in most cases. For example, the Activity in Chapter 13 (Observing Patterns in Inherited Traits) asks the student to interpret data from an experiment revealing the suppressive effect of cystic fibrosis mutations on cellular uptake of *Salmonella* bacteria. This Activity continues the explanation of cystic fibrosis inheritance patterns begun in the chapter's Application section.



**CHAPTER-SPECIFIC CHANGES** This new edition contains 275 new photographs and almost 200 new or updated illustrations. In addition, the text of every chapter has been updated and revised for clarity. A page-by-page guide to new content and figures is available upon request, but we summarize the highlights here.

### **Chapter 1, Invitation to Biology**

Renewed and updated emphasis on the relevance of new species discovery and the process of science; new features spotlight Smithsonian curator Kris Helgen and marine biologist Tierney Thys.

### **Chapter 2, Life's Chemical Basis**

New graphics illustrate elements and radioactive decay; new feature spotlights volcanologist Ken Sims sampling radioisotopes in lava.

### **Chapter 3, Molecules of Life**

New illustrations of carbon rings and tertiary structure; new feature spotlights discovery of carbohydrates in gas surrounding a sunlike star.

### **Chapter 4, Cell Structure**

New photos illustrate surface-to-volume ratio, prokaryotes, biofilms, food vacuoles, chloroplasts, amyloplasts, basal bodies, and *E. coli* on food. New art illustrates plant cell walls, plasmodesmata, and cell junctions. Comparison of microscopy techniques updated using *Paramecium*. New features highlight electrical engineer Aydogan Ozcan's cell phone microscope, and astrobiologist Kevin Hand's work with NASA.

### **Chapter 5, Ground Rules of Metabolism**

New photos illustrate potential energy, activation energy, energy transfer in redox reactions, turgor, phagocytosis, and alcohol abuse. Temperature-dependent enzyme activity now illustrated with polymerases. New feature highlights pressure-tolerant enzymes of deep sea amphipods. Expanded material on cofactors consolidated with ATP into new section. New activity requires interpretation of pH activity graphs of four enzymes from an extremophile archaean.

### **Chapter 6, Where It Starts—Photosynthesis**

New photos illustrate phycobilins, and adaptations of C4 plants. New feature highlights conservation work of forester Willie Smits.

### **Chapter 7, How Cells Release Chemical Energy**

New photos illustrate alcoholic and lactate fermentation, mitochondria, and mitochondrial disease. Revised art shows aerobic respiration's third stage. New feature highlights Benjamin Rapoport's glucose-driven, implantable fuel cell.

### **Chapter 8, DNA Structure and Function**

Chromosome and DNA artwork has been revised for consistency throughout unit; DNA replication art updated.

New photos illustrate DNA, x-ray diffraction, and mutation. New section consolidates material on DNA damage and mutations. New Figure spotlights marine biologist Mariana Fuentes, who studies how global warming is impacting sex ratios in sea turtle populations. Sex determination figure removed (text content remains).

### **Chapter 9, From DNA to Protein**

New feature highlights Jack Horner's discovery of *T. rex* collagen in an ancient fossil. Expanded material on the effects of mutation includes new micrograph of a sickled blood cell. Ricin essay expanded to include other RIPs along with new photos and illustrations. New activity requires interpretation of data on the effects of an engineered RIP on cancer cells.

### **Chapter 10, Control of Gene Expression**

New photos illustrate a polytene chromosome, *antennapedia* gene and mutation, X chromosome inactivation, *Arabidopsis* mutations, and breast cancer survivors; new feature details evolution of lactose tolerance. New section covers epigenetics; new activity requires analysis of retrospective data on an epigenetic effect.

### **Chapter 11, How Cells Reproduce**

New photos illustrate mitosis, the mitotic spindle; new section details telomeres. New feature highlights behavioral ecologist Iain Couzin's hypothesis about collective behavior in metastatic cells.

### **Chapter 12, Meiosis and Sexual Reproduction**

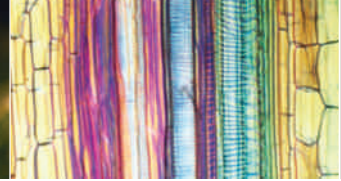
New features highlight evolutionary biologist Maurine Neiman's work on the selective advantage of asexuality in the New Zealand mud snail, and asexuality in bdelloid rotifers. New photos illustrate crossovers and DNA repair during mitosis and meiosis.

### **Chapter 13, Observing Patterns in Inherited Traits**

New figure illustrates how genotype gives rise to phenotype; new photos illustrate epistasis and continuous variation. Coverage of environmental effects on gene expression expanded and updated with new epigenetics research and new feature highlighting psychologist Gay Bradshaw's work on PTSD in elephants.

### **Chapter 14, Human Inheritance**

New feature spotlights geneticist Nancy Wexler's work on Huntington's disease; new photo illustrates albinism.



### **Chapter 15, Biotechnology**

Coverage of personal genetic testing updated with new medical applications, including photo of Angelina Jolie. New photos show recent examples of genetically modified animals. New “who’s the daddy” critical thinking question offers students an opportunity to analyze a paternity test based on SNPs.

### **Chapter 16, Evidence of Evolution**

Photos of analogous plants replaced with classic examples; new photo in morphological convergence section illustrates the difference. Photos of 19th century naturalists added to emphasize the process of science that led to natural selection theory. Expanded coverage of fossils includes how banded iron formations provide evidence of evolution of photosynthesis, and new feature spotlighting paleontologist Paul Sereno. New series of paleogeographic maps from Ron Blakey.

### **Chapter 17, Processes of Evolution**

Added simple graphic to illustrate founder effect, and replaced hypothetical example in text with reduced diversity of ABO alleles in Native Americans. Consolidated and expanded material on antibiotic resistance into new Application section that covers overuse of antibiotics in livestock. New feature highlights evolutionary biologist Julia Day’s work on speciation in African cichlids. New photos illustrate behavioral isolation in peacock spiders; new graphics illustrate stasis in coelacanths, and parsimony analysis. Added example of using cladistics to study viral evolution.

### **Chapter 18, Life’s Origin and Early Evolution**

Added information about earliest evidence of liquid water on Earth, a new contender for oldest fossil cells, and Robert Ballard’s discovery of deep sea hydrothermal vents.

### **Chapter 19, Viruses, Bacteria, and Archaea**

New feature about virologist Nathan Wolfe, increased coverage of viral recombination and of the roles of bacteria in human health and as decomposers.

### **Chapter 20, The Protists**

New graphic illustrating primary and secondary endosymbiosis; added information about diatoms as a source of petroleum; new feature about Ken Banks, who created a text messaging system now used to track malaria outbreaks; coverage of choanoflagellates (the modern protists most closely related to animals) moved to this chapter.

### **Chapter 21, Plant Evolution**

Updated life cycle graphics; improved photos of liverworts and horworts; new feature about Jeff Bencá’s studies of lycophytes, new coverage of seed banks as stores of plant diversity.

### **Chapter 22, Fungi**

New graphics illustrating fungal phylogeny and a generalized fungal life cycle; new feature about DeeAnn Reeder, who studies white nose syndrome in bats; new coverage of fungi that infect insects and use of fungi in biotechnology and research; new coverage of the chytrid implicated in many amphibian declines.

### **Chapter 23, Animals I: Major Invertebrate Groups**

New graphic comparing body plans in acelomate, pseudocoelomate, and coelomate worms; new feature about David Gruber’s studies of biofluorescence in cnidarians; added information about penis fencing in marine flatworms and regeneration in planarians, similarity between larvae of annelids and mollusks as evidence of shared ancestry.

### **Chapter 24, Animals II: The Chordates**

Updated evolutionary tree diagrams for chordates showing monophyly of jawless fishes; dropped discussion of “craniates”; updated and revised discussion of primate subgroups and human evolution with new photos and graphics; new feature about paleontologists Meave and Louise Leakey; new discussion of health problems related to our bipedalism.

### **Chapter 25, Plant Tissues**

Reorganized to consolidate growth patterns into a single section. Many new photos added to illustrate internal structure of stems, leaves, roots. Two new features highlight the work of plant biologist Mark Olson and plant ecologist Jon Keeley.

### **Chapter 26, Plant Nutrition and Transport**

New feature highlights the work of agroecologist Jerry Glover. Many new photos and updated art pieces. Illustration of Casparian strip integrated with new micrograph.

### **Chapter 27, Plant Reproduction and Development**

Updated material on bee pollination behavior and colony collapse. Expanded coverage of asexual reproduction includes seedless crops, and historical information on John Chapman and *Phylloxera*. Plant development heavily revised to reflect paradigm shifts driven by recent breakthroughs in research. Expanded material on hormones organized by section. New features highlight the work of ethnobotanist Grace Gobbo and entomologist Dino Martins. New photos illustrate UV-reflecting patterns in flowers, mammal and bird pollination, embryonic development, internal anatomy of eudicot seeds, ABA mutation, chloroplast tropism, abscission, hypersensitive response, honeybee pollination. New art shows apical dominance, ethylene production during fruit formation, stomata function, gibberellin function in seed germination, circadian cycles of gene expression.



### **Chapter 28, Animal Tissues and Organ Systems**

New feature about Brenda Larison's investigation into the adaptive value of zebra stripes, new information about walrus blubber (a specialized adipose tissue); improved coverage of organ systems; added information about tissue regeneration in nonhuman animals to discussion of stem cells.

### **Chapter 29, Neural Control**

Added a subsection about methods of studying the human brain. New feature highlights the work of Diana Reiss, who studies dolphin cognition. New coverage of concussions and traumatic brain injury.

### **Chapter 30, Sensory Perception**

New graphic of neurons involved in olfaction; new information about loss of sweet receptors in cats and some other carnivores and about newly discovered taste receptor for fatty acids; new feature about Fernando Montealegre-Z's studies of insect hearing; new section about cochlear implants.

### **Chapter 31, Endocrine Control**

New coverage of the roles of thyroid hormone in amphibian metamorphosis and of melatonin in seasonal coat color changes in arctic hares; updated coverage of phthalates as endocrine disruptors.

### **Chapter 32, Structural Support and Movement**

New opening section about mechanisms of animal locomotion; new feature about Kakani Katija Young's investigation into how marine animals mix the seas; new information about muscles of an elephant's trunk and the composition of muscle fibers in loris limbs.

### **Chapter 33, Circulation**

New graphic showing the structure of and relationship among blood vessels; improved description of and depiction of capillary exchange; added information about circulation in giraffes and about cardiocerebral resuscitation.

### **Chapter 34, Immunity**

Added material on neutrophil nets, chronic inflammation, cytokine storm, public confidence as a factor in the success of vaccination programs. Updated material on HIV/AIDS treatment strategies. New photos illustrate T cell/APC interaction, skin as a surface barrier, neutrophil nets, IgM polymers, leukocytes populating a lymph node, cytotoxic T cells killing a cancer cell, contact allergy. New feature highlights biochemist Mark Merchant's work discovering and characterizing crocodylian antimicrobial peptides.

### **Chapter 35, Respiration**

Added a photo of horseshoe crab hemolymph and information about modification of nostril position in vertebrates; updated

information about first aid for choking. New feature about Cynthia Beall's study of humans who live at high altitude.

### **Chapter 36, Digestion and Human Nutrition**

New graphic illustrates organs that contribute material to the small intestine; new table summarizes chemical digestion. New feature highlights the work of epidemiologist Christopher Golden, who studies the nutritional importance of bushmeat. New application about health effects of obesity.

### **Chapter 37, Maintaining the Internal Environment**

New feature highlights biological anthropologist Cheryl Knott's use of urinalysis in studies of orangutans. New information about climate-related genetic adaptations in humans.

### **Chapter 38, Reproduction and Development**

Major reorganization—the overview of development now precedes the discussion of humans. New feature highlights the work of zoologist Stewart Nicol, who studies sexual anatomy and behavior of echidnas. Improved depiction of the ovarian cycle.

### **Chapter 39, Animal Behavior**

Added information about epigenetic effects on behavior. New feature highlights biologist Isabelle Charrier's work studying vocal recognition in animals. Improved discussion of parental care variation among animal groups.

### **Chapter 40, Population Ecology**

New feature highlights the work of biologist Karen DeMatteo, who studies predator populations. Revised coverage of life history strategies.

### **Chapter 41, Community Ecology**

New feature highlights population geneticist Nayuta Yamashita's study of resource partitioning in lemurs.

### **Chapter 42, Ecosystems**

New feature highlights conservationist Jonathan Waterman's journey along the water-deprived Colorado River. Updated information about current level of atmospheric carbon dioxide; expanded discussion of the nitrogen cycle.

### **Chapter 43, The Biosphere**

Improved general description of biomes. Added information about desert crust. New feature highlights biogeochemist Katey Walter Anthony's studies of arctic methane.

### **Chapter 44, Human Effects on the Biosphere**

New feature about Paula Kahumbu's conservation efforts in Africa; sustainable uses of resources. Updated information about acid rain, ozone depletion.

## STUDENT AND INSTRUCTOR RESOURCES

**INSTRUCTOR COMPANION SITE** Everything you need for your course in one place! This collection of book-specific lecture and class tools is available online via [www.cengage.com/login](http://www.cengage.com/login). Access and download PowerPoint presentations, images, instructor's manuals, videos, and more.

### **CENGAGE LEARNING TESTING POWERED BY COGNERO**

A flexible online system that allows you to:

- author, edit, and manage test bank content from multiple Cengage Learning solutions
- create multiple test versions in an instant
- deliver tests from your LMS, your classroom or wherever you want

**STUDENT INTERACTIVE WORKBOOK** Labeling exercises, self-quizzes, review questions, and critical thinking exercises help students with retention and better test results.

### **THE BROOKS/COLE BIOLOGY VIDEO LIBRARY 2009**

**FEATURING BBC MOTION GALLERY** Looking for an engaging way to launch your lectures? The Brooks/Cole series features short high-interest segments: Pesticides: Will More Restrictions Help or Hinder?; A Reduction in Biodiversity; Are Biofuels as Green as They Claim?; Bone Marrow as a New Source for the Creation of Sperm; Repairing Damaged Hearts with Patients' Own Stem Cells; Genetically Modified Virus Used to Fight Cancer; Seed Banks Helping to Save Our Fragile Ecosystem; The Vanishing Honeybee's Impact on Our Food Supply.

**MINDTAP** A personalized, fully online digital learning platform of authoritative content, assignments, and services that engages your students with interactivity while also offering you choice in the configuration of coursework and enhancement of the curriculum via web-apps known as MindApps. MindApps range from ReadSpeaker (which reads the text out loud to students), to Kaltura (allowing you to insert inline video and audio into your curriculum). MindTap is well beyond an eBook, a homework solution or digital supplement, a resource center website, a course delivery platform, or a Learning Management System. It is the first in a new category—the Personal Learning Experience.

**APLIA FOR BIOLOGY** The Aplia system helps students learn key concepts via Aplia's focused assignments and active learning opportunities that include randomized, automatically graded questions, exceptional text/art integration, and immediate feedback. Aplia has a full course management system that can be used independently or in conjunction with other course management systems such as MindTap, D2L, or Blackboard. Visit [www.aplia.com/biology](http://www.aplia.com/biology).



## Acknowledgments

We are incredibly grateful for the ongoing input of the instructors, listed on the following page, who helped us polish our text and shape our thinking. Key Concepts, Data Analysis Activities, On-Page Glossaries, custom videos—such features are direct responses to their comments and suggestions.

This edition benefits from a collaborative association with the National Geographic Society in Washington D.C. The Society has graciously allowed us to enhance our presentation with its extensive resources, including beautiful maps and images, Society explorer and grantee materials, and online videos.

Thanks to Yolanda Cossio and Peggy Williams at Cengage Learning for continuing to encourage us to improve and innovate, and for suggesting that we collaborate with National Geographic. Jake Warde ensured that this collaboration ran smoothly and Grace Davidson did the same for the project as a whole. Leila Hishmeh, Anna Kistin, Jen Shook, and Wesley Della Volla helped us acquire National Geographic maps and photos; Melissa Tomaselli and Sunetra Mukundan obtained text permissions.

This edition's sleek new look is a product of talented designer Irene Morris. Thanks also to Christina Ciaramella for photoresearch and photo permissions. Copyeditor Anita Wagner and proofreader Diane Miller helped us keep our text clear, concise, and correct; tireless editorial assistant Victor Luu organized meetings, reviews, and paperwork. Lauren Oliveira created a world-class technology package for both students and instructors.

—Lisa Starr, Chris Evers, and Cecie Starr 2013

# Influential Class Testers and Reviewers

**Brenda Alston-Mills**  
*North Carolina State University*

**Kevin Anderson**  
*Arkansas State University - Beebe*

**Norris Armstrong**  
*University of Georgia*

**Tasneem Ashraf**  
*Coshise College*

**Dave Bachoon**  
*Georgia College & State University*

**Neil R. Baker**  
*The Ohio State University*

**Andrew Baldwin**  
*Mesa Community College*

**David Bass**  
*University of Central Oklahoma*

**Lisa Lynn Boggs**  
*Southwestern Oklahoma State University*

**Gail Breen**  
*University of Texas at Dallas*

**Marguerite “Peggy” Brickman**  
*University of Georgia*

**David Brooks**  
*East Central College*

**David William Bryan**  
*Cincinnati State College*

**Lisa Bryant**  
*Arkansas State University - Beebe*

**Katherine Buhrer**  
*Tidewater Community College*

**Uriel Buitrago-Suarez**  
*Harper College*

**Sharon King Bullock**  
*Virginia Commonwealth University*

**John Capehart**  
*University of Houston - Downtown*

**Daniel Ceccoli**  
*American InterContinental University*

**Tom Clark**  
*Indiana University South Bend*

**Heather Collins**  
*Greenville Technical College*

**Deborah Dardis**  
*Southeastern Louisiana University*

**Cynthia Lynn Dassler**  
*The Ohio State University*

**Carole Davis**  
*Kellogg Community College*

**Lewis E. Deaton**  
*University of Louisiana - Lafayette*

**Jean Swaim DeSaix**  
*University of North Carolina - Chapel Hill*

**(Joan) Lee Edwards**  
*Greenville Technical College*

**Hamid M. Elhag**  
*Clayton State University*

**Patrick Enderle**  
*East Carolina University*

**Daniel J. Fairbanks**  
*Brigham Young University*

**Amy Fenster**  
*Virginia Western Community College*

**Kathy E. Ferrell**  
*Greenville Technical College*

**Rosa Gambier**  
*Suffolk Community College - Ammerman*

**Tim D. Gaskin**  
*Cuyahoga Community College - Metropolitan*

**Stephen J. Gould**  
*Johns Hopkins University*

**Laine Gurley**  
*Harper College*

**Marcella Hackney**  
*Baton Rouge Community College*

**Gale R. Haigh**  
*McNeese State University*

**John Hamilton**  
*Gainesville State*

**Richard Hanke**  
*Rose State Community College*

**Chris Haynes**  
*Shelton St. Community College*

**Kendra M. Hill**  
*South Dakota State University*

**Juliana Guillory Hinton**  
*McNeese State University*

**W. Wyatt Hoback**  
*University of Nebraska, Kearney*

**Kelly Hogan**  
*University of North Carolina*

**Norma Hollebeke**  
*Sinclair Community College*

**Robert Hunter**  
*Trident Technical College*

**John Ireland**  
*Jackson Community College*

**Thomas M. Justice**  
*McLennan College*

**Timothy Owen Koneval**  
*Laredo Community College*

**Sherry Krayesky**  
*University of Louisiana - Lafayette*

**Dubear Kroening**  
*University of Wisconsin - Fox Valley*

**Jerome Krueger**  
*South Dakota State University*

**Jim Krupa**  
*University of Kentucky*

**Mary Lynn LaMantia**  
*Golden West College*

**Dale Lambert**  
*Tarrant County College*

**Kevin T. Lampe**  
*Bucks County Community College*

**Susanne W. Lindgren**  
*Sacramento State University*

**Madeline Love**  
*New River Community College*

**Dr. Kevin C. McGarry**  
*Kaiser College - Melbourne*

**Ashley McGee**  
*Alamo College*

**Jeanne Mitchell**  
*Truman State University*

**Alice J. Monroe**  
*St. Petersburg College - Clearwater*

**Brenda Moore**  
*Truman State University*

**Erin L. G. Morrey**  
*Georgia Perimeter College*

**Rajkumar “Raj” Nathaniel**  
*Nicholls State University*

**Francine Natalie Norflus**  
*Clayton State University*

**Harold Olivey**  
*Indiana University Northwest*

**Alexander E. Olvido**  
*Virginia State University*

**John C. Osterman**  
*University of Nebraska, Lincoln*

**Bob Patterson**  
*North Carolina State University*

**Shelley Penrod**  
*North Harris College*

**Carla Perry**  
*Community College of Philadelphia*

**Mary A. (Molly) Perry**  
*Kaiser College - Corporate*

**John S. Peters**  
*College of Charleston*

**Carlie Phipps**  
*SUNY IT*

**Michael Plotkin**  
*Mt. San Jacinto College*

**Ron Porter**  
*Penn State University*

**Karen Raines**  
*Colorado State University*

**Larry A. Reichard**  
*Metropolitan Community College - Maplewood*

**Jill D. Reid**  
*Virginia Commonwealth University*

**Robert Reinswold**  
*University of Northern Colorado*

**Ashley E. Rhodes**  
*Kansas State University*

**David Rintoul**  
*Kansas State University*

**Darryl Ritter**  
*Northwest Florida State College*

**Amy Wolf Rollins**  
*Clayton State University*

**Sytha Salihu**  
*West Virginia University*

**Jon W. Sandridge**  
*University of Nebraska*

**Robin Searles-Adenegan**  
*Morgan State University*

**Erica Sharar**  
*IVC; National University*

**Julie Shepker**  
*Kaiser College - Melbourne*

**Rainy Shorey**  
*Illinois Central College*

**Eric Sikorski**  
*University of South Florida*

**Phoebe Smith**  
*Suffolk County Community College*

**Robert (Bob) Speed**  
*Wallace Junior College*

**Tony Stancampiano**  
*Oklahoma City Community College*

**Jon R. Stoltzfus**  
*Michigan State University*

**Peter Svensson**  
*West Valley College*

**Jeffrey L. Travis**  
*University at Albany*

**Nels H. Troelstrup, Jr.**  
*South Dakota State University*

**Allen Adair Tubbs**  
*Troy University*

**Will Unsell**  
*University of Central Oklahoma*

**Rani Vajravelu**  
*University of Central Florida*

**Jack Waber**  
*West Chester University of Pennsylvania*

**Kathy Webb**  
*Bucks County Community College*

**Amy Stinnett White**  
*Virginia Western Community College*

**Virginia White**  
*Riverside Community College*

**Robert S. Whyte**  
*California University of Pennsylvania*

**Kathleen Lucy Wilsenn**  
*University of Northern Colorado*

**Penni Jo Wilson**  
*Cleveland State Community College*

**Robert Wise**  
*University of Wisconsin Oshkosh*

**Michael L. Womack**  
*Macon State College*


**Maury Wrightson**  
*Germanna Community College*

**Mark L. Wygoda**  
*McNeese State University*

**Lan Xu**  
*South Dakota State University*

**Poksyn (“Grace”) Yoon**  
*Johnson and Wales University*

**Muriel Zimmermann**  
*Chaffey College*



Near a tent serving as a makeshift laboratory, herpetologist Paul Oliver records the call of a frog on an expedition to New Guinea's Foja Mountains cloud forest.

# 1

## INVITATION TO BIOLOGY

### Links to Earlier Concepts

Whether or not you have studied biology, you already have an intuitive understanding of life on Earth because you are part of it. Every one of your experiences with the natural world—from the warmth of the sun on your skin to the love of your pet—contributes to that understanding.

### KEY CONCEPTS



#### THE SCIENCE OF NATURE

We can understand life by studying it at many levels, starting with atoms that are components of all matter, and extending to interactions of organisms with their environment.



#### LIFE'S UNITY

All living things require ongoing inputs of energy and raw materials; all sense and respond to change; and all have DNA that guides their functioning.



#### LIFE'S DIVERSITY

Observable characteristics vary tremendously among organisms. Various classification systems help us keep track of the differences.



#### THE NATURE OF SCIENCE

Carefully designing experiments helps researchers unravel cause-and-effect relationships in complex natural systems.



#### LIMITATIONS OF SCIENCE

Science addresses only testable ideas about observable events and processes. It does not address anything untestable, such as beliefs and opinions.

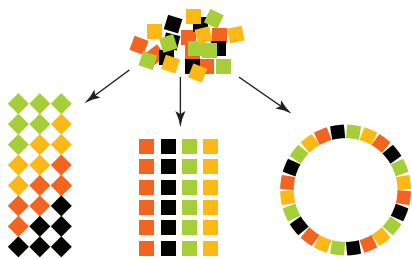


# 1.1 HOW DO LIVING THINGS DIFFER FROM NONLIVING THINGS?

## LIFE IS MORE THAN THE SUM OF ITS PARTS

**Biology** is the study of life, past and present. What, exactly, is the property we call “life”? We may never actually come up with a good definition, because living things are too diverse, and they consist of the same basic components as nonliving things. When we try to define life, we end up only identifying properties that differentiate living from nonliving things.

Complex properties, including life, often emerge from the interactions of much simpler parts. To understand why, take a look at this drawing:



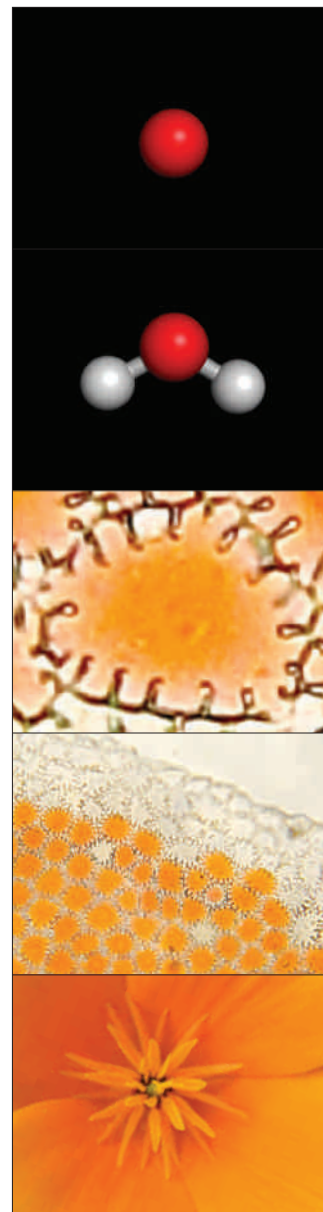
The property of “roundness” emerges when the parts are organized one way, but not other ways. Characteristics of a system that do not appear in any of the system’s components are called **emergent properties**. The idea that structures with emergent properties can be assembled from the same basic building blocks is a recurring theme in our world, and also in biology.

## LIFE'S ORGANIZATION

Through the work of biologists, we are beginning to understand an overall pattern in the way life is organized. We can look at life in successive levels of organization, with new emergent properties appearing at each level (**FIGURE 1.1**).

Life’s organization starts with interactions between atoms. **Atoms** are fundamental building blocks of all substances **1**. Atoms join as **molecules** **2**. There are no atoms unique to living things, but there are unique molecules. In today’s world, only living things make the “molecules of life,” which are lipids, proteins, DNA, RNA, and complex carbohydrates. The emergent property of “life” appears at the next level, when many molecules of life become organized as a cell **3**. A **cell** is the smallest unit of life. Cells survive and reproduce themselves using energy, raw materials, and information in their DNA.

Some cells live and reproduce independently. Others do so as part of a multicelled organism. An **organism**



### 1 atom

Atoms are fundamental units of all substances, living or not. This image shows a model of a single atom.

### 2 molecule

Atoms join other atoms in molecules. This is a model of a water molecule. The molecules special to life are much larger and more complex than water.

### 3 cell

The cell is the smallest unit of life. Some, like this plant cell, live and reproduce as part of a multicelled organism; others do so on their own.

### 4 tissue

Organized array of cells that interact in a collective task. This is epidermal tissue on the outer surface of a flower petal.

### 5 organ




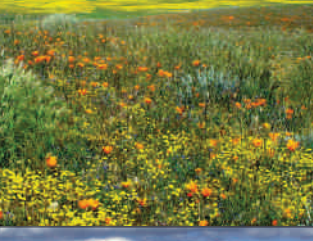
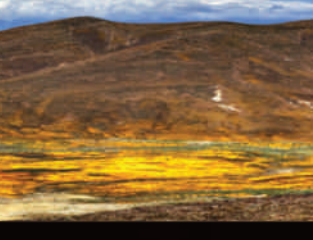

Structural unit of interacting tissues. Flowers are the reproductive organs of many plants.

**FIGURE 1.1 {Animated}** An overall pattern in the way life is organized. New emergent properties appear at each successive level.

is an individual that consists of one or more cells. A poppy plant is an example of a multicelled organism **7**.

In most multicelled organisms, cells are organized as **tissues** **4**. A **tissue** consists of specific types of cells organized in a particular pattern. The arrangement

CREDITS : (in text) © Cengage Learning 2015; (1) 1, 2: © Cengage Learning; 3, 4: © Umberto Salvagnin, www.flickr.com/photos/kaibara; 5: California Poppy, © 2009, Christine M. Welter.

	<p><b>6 organ system</b> A set of interacting organs. The shoot system of this poppy plant includes its aboveground parts: leaves, flowers, and stems.</p>
	<p><b>7 multicelled organism</b> Individual that consists of more than one cell. Cells of this California poppy plant are part of its two organ systems: aboveground shoots and belowground roots.</p>
	<p><b>8 population</b> Group of single-celled or multicelled individuals of a species in a given area. This population of California poppy plants is in California's Antelope Valley Poppy Reserve.</p>
	<p><b>9 community</b> All populations of all species in a specified area. These plants are part of a community called the Antelope Valley Poppy Reserve.</p>
	<p><b>10 ecosystem</b> A community interacting with its physical environment through the transfer of energy and materials. Sunlight and water sustain the community in the Antelope Valley.</p>
	<p><b>11 biosphere</b> The sum of all ecosystems: every region of Earth's waters, crust, and atmosphere in which organisms live. No ecosystem in the biosphere is truly isolated from any other.</p>

allows the cells to collectively perform a special function such as protection from injury (dermal tissue), movement (muscle tissue), and so on.

An **organ** is an organized array of tissues that collectively carry out a particular task or set of tasks **5**. For example, a

flower is an organ of reproduction in plants; a heart, an organ that pumps blood in animals. An **organ system** is a set of organs and tissues that interact to keep the individual's body working properly **6**. Examples of organ systems include the aboveground parts of a plant (the shoot system), and the heart and blood vessels of an animal (the circulatory system).

A **population** is a group of individuals of the same type, or species, living in a given area **8**. An example would be all of the California poppies that are living in California's Antelope Valley Poppy Reserve. At the next level, a **community** consists of all populations of all species in a given area. The Antelope Valley Reserve community includes California poppies and all other organisms—plants, animals, microorganisms, and so on—living in the reserve **9**. Communities may be large or small, depending on the area defined.

The next level of organization is the **ecosystem**, which is a community interacting with its environment **10**. The most inclusive level, the **biosphere**, encompasses all regions of Earth's crust, waters, and atmosphere in which organisms live **11**.

**atom** Fundamental building block of all matter.

**biology** The scientific study of life.

**biosphere** All regions of Earth where organisms live.

**cell** Smallest unit of life.

**community** All populations of all species in a given area.

**ecosystem** A community interacting with its environment.

**emergent property** A characteristic of a system that does not appear in any of the system's component parts.

**molecule** An association of two or more atoms.

**organ** In multicelled organisms, a grouping of tissues engaged in a collective task.

**organism** Individual that consists of one or more cells.

**organ system** In multicelled organisms, set of organs engaged in a collective task that keeps the body functioning properly.

**population** Group of interbreeding individuals of the same species that live in a given area.

**tissue** In multicelled organisms, specialized cells organized in a pattern that allows them to perform a collective function.

### TAKE-HOME MESSAGE 1.1

Biologists study life by thinking about it at different levels of organization, with new emergent properties appearing at each successive level.

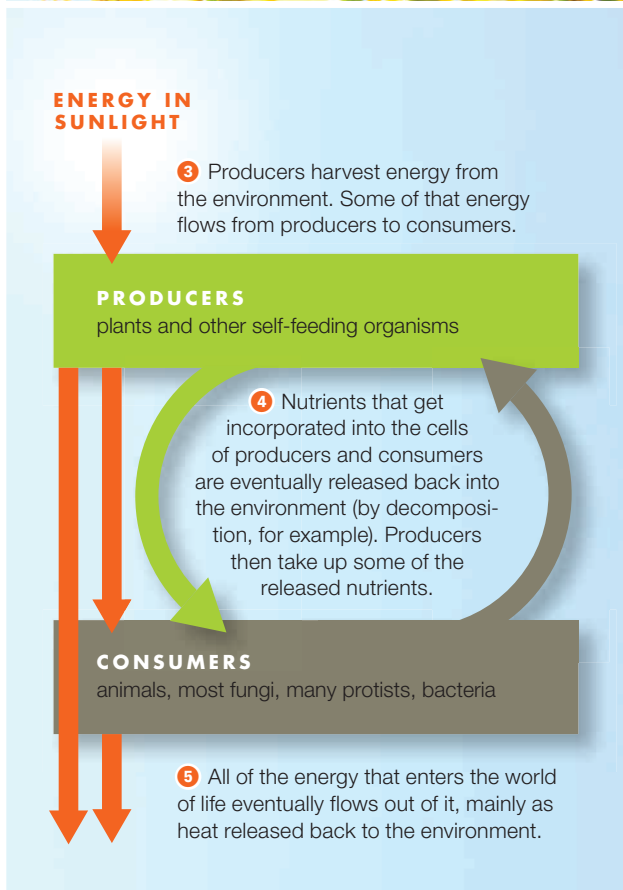
All things, living or not, consist of the same building blocks: atoms. Atoms join as molecules.

The unique properties of life emerge as certain kinds of molecules become organized into cells.

Higher levels of life's organization include multicelled organisms, populations, communities, ecosystems, and the biosphere.

**CREDITS:** (1) 6: Lady Bird Johnson Wildflower Center; 7: Michael Szoenyi/Science Source; 8: Photographers Choice RF/SuperStock; 9: © Sergei Krupnov, www.flickr.com/photos/7969319@N03; 10: © Mark Koberg Photography; 11: NASA.

## 1.2 HOW ARE ALL LIVING THINGS ALIKE?



**FIGURE 1.2 {Animated}** The one-way flow of energy and cycling of materials through the world of life.

Even though we cannot precisely define “life,” we can intuitively understand what it means because all living things share a set of key features. All require ongoing inputs of energy and raw materials; all sense and respond to change; and all pass DNA to offspring (**TABLE 1.1**).

**TABLE 1.1**

### Three Key Features of Living Things

<b>Requirement for energy and nutrients</b>	Ongoing inputs of energy and nutrients sustain life.
<b>Homeostasis</b>	Each living thing has the capacity to sense and respond to change.
<b>Use of DNA as hereditary material</b>	DNA is passed to offspring during reproduction.

### ORGANISMS REQUIRE ENERGY AND NUTRIENTS

Not all living things eat, but all require energy and nutrients on an ongoing basis. Both are essential to maintain the functioning of individual organisms and the organization of life. A **nutrient** is a substance that an organism needs for growth and survival but cannot make for itself.

Organisms spend a lot of time acquiring energy and nutrients (**FIGURE 1.2**). However, the source of energy and the type of nutrients required differ among organisms. These differences allow us to classify all living things into two categories: producers and consumers. **Producers** make their own food using energy and simple raw materials they get from nonbiological sources **1**. Plants are producers that use the energy of sunlight to make sugars from water and carbon dioxide (a gas in air), a process called **photosynthesis**. By contrast, **consumers** cannot make their own food. They get energy and nutrients by feeding on other organisms **2**. Animals are consumers. So are decomposers, which feed on the wastes or remains of other organisms. The leftovers from consumers’ meals end up in the environment, where they serve as nutrients for producers. Said another way, nutrients cycle between producers and consumers.

Unlike nutrients, energy is not cycled. It flows through the world of life in one direction: from the environment **3**, through organisms **4**, and back to the environment **5**. This flow maintains the organization of every living cell and body, and it also influences how individuals interact with one another and their environment. The energy flow is one-way, because with each transfer, some energy escapes as heat, and cells cannot use heat as an energy source. Thus, energy that enters the world of life eventually leaves it (we return to this topic in Chapter 5).

**CREDITS:** (2) top, © Victoria Pinder, www.flickr.com/photos/vixstarplus; bottom, © Cengage Learning 2015; (Table 1.1) © Cengage Learning.

## ORGANISMS SENSE AND RESPOND TO CHANGE

An organism cannot survive for very long in a changing environment unless it adapts to the changes. Thus, every living thing has the ability to sense and respond to change both inside and outside of itself (**FIGURE 1.3**). For example, after you eat, the sugars from your meal enter your bloodstream. The added sugars set in motion a series of events that causes cells throughout the body to take up sugar faster, so the sugar level in your blood quickly falls. This response keeps your blood sugar level within a certain range, which in turn helps keep your cells alive and your body functioning.

The fluid portion of your blood is a component of your internal environment, which is all of the body fluids outside of cells. Unless that internal environment is kept within certain ranges of temperature and other conditions, your body cells will die. By sensing and adjusting to change, you and all other organisms keep conditions in the internal environment within a range that favors survival. **Homeostasis** is the name for this process, and it is one of the defining features of life.

## ORGANISMS USE DNA

With little variation, the same types of molecules perform the same basic functions in every organism. For example, information in an organism's **DNA** (deoxyribonucleic acid) guides ongoing functions that sustain the individual through its lifetime. Such functions include **development**: the process by which the first cell of a new individual gives rise to a multicelled adult; **growth**: increases in cell number, size, and volume; and **reproduction**: processes by which individuals produce offspring.

**consumer** Organism that gets energy and nutrients by feeding on tissues, wastes, or remains of other organisms.

**development** Multistep process by which the first cell of a new multicelled organism gives rise to an adult.

**DNA** Deoxyribonucleic acid; carries hereditary information that guides development and other activities.

**growth** In multicelled species, an increase in the number, size, and volume of cells.

**homeostasis** Process in which an organism keeps its internal conditions within tolerable ranges by sensing and responding to change.

**inheritance** Transmission of DNA to offspring.

**nutrient** Substance that an organism needs for growth and survival but cannot make for itself.

**photosynthesis** Process by which producers use light energy to make sugars from carbon dioxide and water.

**producer** Organism that makes its own food using energy and nonbiological raw materials from the environment.

**reproduction** Processes by which parents produce offspring.



**FIGURE 1.3** Living things sense and respond to their environment. This baby orangutan is laughing in response to being tickled. Apes and humans make different sounds when being tickled, but the airflow patterns are so similar that we can say apes really do laugh.

Individuals of every natural population are alike in certain aspects of their body form and behavior because their DNA is very similar: Orangutans look like orangutans and not like caterpillars because they inherited orangutan DNA, which differs from caterpillar DNA in the information it carries. **Inheritance** refers to the transmission of DNA to offspring. All organisms inherit their DNA from one or two parents.

DNA is the basis of similarities in form and function among organisms. However, the details of DNA molecules differ, and herein lies the source of life's diversity. Small variations in the details of DNA's structure give rise to differences among individuals, and also among types of organisms. As you will see in later chapters, these differences are the raw material of evolutionary processes.

### TAKE-HOME MESSAGE 1.2

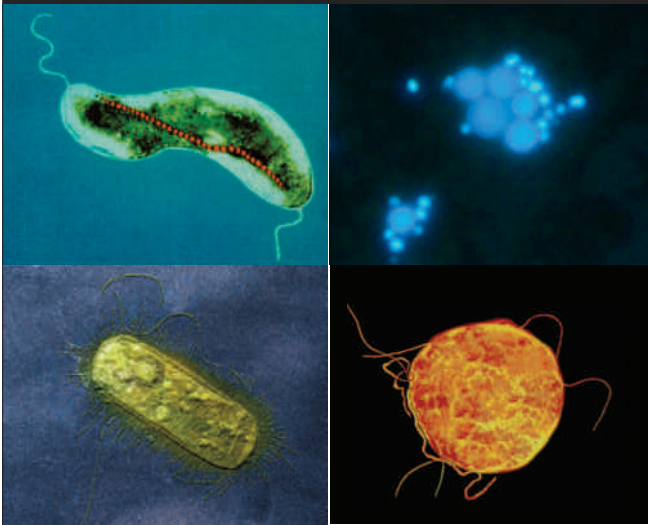
Continual inputs of energy and the cycling of materials maintain life's complex organization.

Organisms sense and respond to change inside and outside themselves. They make adjustments that keep conditions in their internal environment within a range that favors cell survival, a process called homeostasis.

All organisms use information in the DNA they inherited from their parent or parents to develop, grow, and reproduce. DNA is the basis of similarities and differences in form and function among organisms.

## 1.3 HOW ARE LIVING THINGS DIFFERENT?

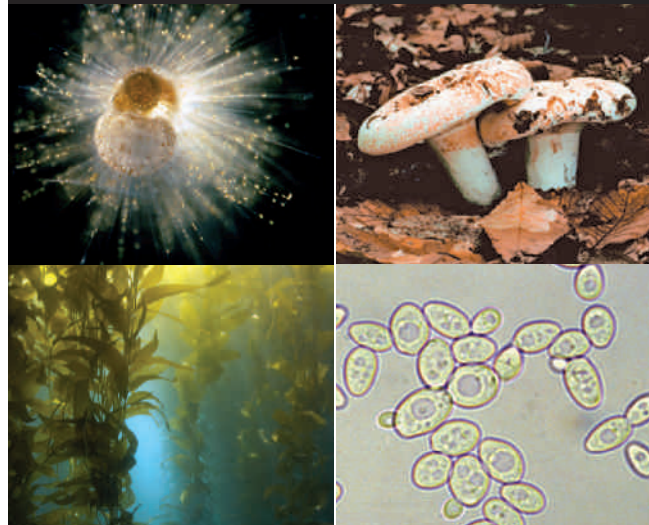
**A Prokaryotes** are single-celled, and have no nucleus. As a group, they are the most diverse organisms.



**bacteria** are the most numerous organisms on Earth. Top, this bacterium has a row of iron crystals that functions like a tiny compass; bottom, a resident of human intestines.

**archaea** resemble bacteria, but they are more closely related to eukaryotes. Top: two types from a hydrothermal vent on the seafloor. Bottom, a type that grows in sulfur hot springs.

**B Eukaryotes** consist of cells that have a nucleus. Eukaryotic cells are typically larger and more complex than prokaryotes.



**protists** are a group of extremely diverse eukaryotes that range from microscopic single cells (top) to giant multicelled seaweeds (bottom).

**fungi** are eukaryotic consumers that secrete substances to break down food outside their body. Most are multicelled (top), but some are single-celled (bottom).

**FIGURE 1.4** A few representatives of life's diversity: **A** some prokaryotes; **B** some eukaryotes.

Living things differ tremendously in their observable characteristics. Various classification schemes help us organize what we understand about the scope of this variation, which we call Earth's **biodiversity**.

For example, organisms can be grouped on the basis of whether they have a **nucleus**, which is a sac with two membranes that encloses and protects a cell's DNA. **Bacteria** (singular, bacterium) and **archaea** (singular, archaeon) are organisms whose DNA is *not* contained within a nucleus. All bacteria and archaea are single-celled, which means each organism consists of one cell (**FIGURE 1.4A**). Collectively, these organisms are the most diverse representatives of life. Different kinds are producers or consumers in nearly all regions of Earth. Some inhabit such extreme environments as frozen desert rocks, boiling sulfur lakes, and nuclear reactor waste. The first cells on Earth may have faced similarly hostile environments.

Traditionally, organisms without a nucleus have been called **prokaryotes**, but this designation is now used only informally. This is because, despite the similar appearance of bacteria and archaea, the two types of cells are less related to one another than we once thought. Archaea

turned out to be more closely related to **eukaryotes**, which are organisms whose DNA is contained within a nucleus. Some eukaryotes live as individual cells; others are multicelled (**FIGURE 1.4B**). Eukaryotic cells are typically larger and more complex than bacteria or archaea.

Structurally, **protists** are the simplest eukaryotes, but as a group they vary dramatically, from single-celled consumers to giant, multicelled producers.

**animal** Multicelled consumer that develops through a series of stages and moves about during part or all of its life.

**archaea** Group of single-celled organisms that lack a nucleus but are more closely related to eukaryotes than to bacteria.

**bacteria** The most diverse and well-known group of single-celled organisms that lack a nucleus.

**biodiversity** Scope of variation among living organisms.

**eukaryote** Organism whose cells characteristically have a nucleus.

**fungus** Single-celled or multicelled eukaryotic consumer that breaks down material outside itself, then absorbs nutrients released from the breakdown.

**nucleus** Sac that encloses a cell's DNA; has two membranes.

**plant** A multicelled, typically photosynthetic producer.

**prokaryote** Single-celled organism without a nucleus.

**protist** Member of a diverse group of simple eukaryotes.

**CREDITS:** (4A) top left, Dr. Richard Frankel; top right, © Dr. Harald Huber, Dr. Michael Hohn, Prof. Dr. K.O. Stetter, University of Regensburg, Germany; bottom left, © Biophoto Associates/Science Source; bottom right, Dr. Terry Beveridge, Visuals Unlimited Inc.; (4B) Protists: top, Courtesy of Allen W. H. Bé and David A. Caron; bottom, © worldswildlifewonders/Shutterstock.com; Fungi: top, © Jupiterimages; bottom, Visuals Unlimited/Masterfile.



**plants** are multicelled eukaryotes. Most are photosynthetic, and have roots, stems, and leaves.

**animals** are multicelled eukaryotes that ingest tissues or juices of other organisms. All actively move about during at least part of their life.

**Fungi** (singular, fungus) are eukaryotic consumers that secrete substances to break down food externally, then absorb nutrients released by this process. Many fungi are decomposers. Most fungi, including those that form mushrooms, are multicellular. Fungi that live as single cells are called yeasts.

**Plants** are multicelled eukaryotes; the majority are photosynthetic producers that live on land. Besides feeding themselves, plants also serve as food for most other land-based organisms.

**Animals** are multicelled consumers that consume tissues or juices of other organisms. Unlike fungi, animals break down food inside their body. They also develop through a series of stages that lead to the adult form. All kinds actively move about during at least part of their lives.

### TAKE-HOME MESSAGE 1.3

Organisms differ in their details; they show tremendous variation in observable characteristics, or traits.

We can divide Earth's biodiversity into broad groups based on traits such as having a nucleus or being multicellular.

**CREDITS:** (4B) Plants: top, © Martin Ruegner/Radius Images/Jupiter Images; bottom, © Jag\_cz/Shutterstock.com; Animals: top, © Martin Zimmerman, Science, 1961, 133:73-79, © AAAS; bottom, © Pixtal/SuperStock; (top right) Tim Laman/National Geographic Creative.

## PEOPLE MATTER



National Geographic Explorer  
**KRISTOFER HELGEN**

**K**ristofer Helgen discovers new animals. Deep in a New Guinea rain forest. High on an Andean mountainside. Resting in a museum's specimen drawer. "Conventional wisdom would have it that we know all the mammals of the world," he notes. "In fact, we know so little. Unique species, profoundly different from anything ever discovered, are out there waiting to be found." His own efforts prove this. Helgen himself has discovered approximately 100 new species of mammals previously unknown to science. "Since I was three years old, I've been transfixed by animals," he recalls. "Even then, my excitement revolved around figuring out how many different kinds there were."

Helgen's search plunges him into the wild on almost every continent. Yet about three times as many new finds are made within the walls of museums. "An expert can go into any large natural history museum and identify kinds of animals no one knew existed," he explains. When only a few specimens of a species exist, and reside in museums scattered across the globe, sheer logistics often prevent researchers from connecting the dots and pinpointing a new find. "Collections build up over centuries," he says, "It's virtually impossible to fully interpret that wealth of material. Every day brings surprises." As Curator of Mammals for the Smithsonian Institution's National Museum of Natural History, he oversees not only the collection's use as an invaluable research resource, but also its continued expansion through exploration.